

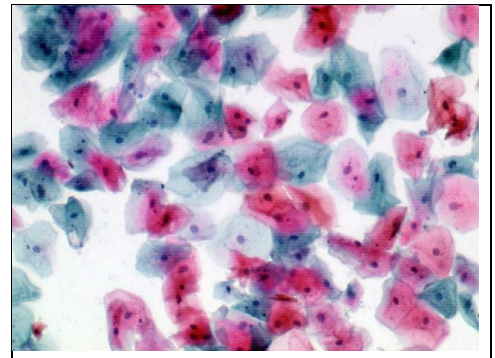
Papanicolaou (PAP) Stain Kit

Description: The Papanicolaou (PAP) Stain Kit is designed to differentiate between a variety of cells in vaginal smears for detection of vaginal, uterine and cervical cancer. In addition, this procedure is valuable for staining a variety of other bodily secretions and cell smears. The procedure was developed in the early 1940's by George Papanicolaou.

Nuclei:	Blue
High Keratin Cells:	Orange
Superficial Cells:	Pink
Erythrocytes:	Dark Pink
Parabasal Cells:	Blue/Green
Intermediate Cells:	Blue/Green
Metaplastic Cells:	May contain both Blue/Green and Pink.

Uses/Limitations: Not to be taken internally.
For In-Vitro Diagnostic use only.
Histological applications.
Do not use if reagents become cloudy.
Do not use past expiration date.
Use caution when handling reagents.
Non-Sterile.


Control Tissue: Gynecological Smear.
Any Superficial Cell Smear.



Kit Contents:

<u>Components</u>	<u>Volume</u>	<u>Storage</u>
Modified Mayer's Hematoxylin	500 ml	15-30°C
OG-6 Solution	500 ml	15-30°C
EA-50 Stain Solution	500 ml	15-30°C

Precautions: This product is a single-use, non-sterile, in vitro diagnostic device.
Avoid contact with skin and eyes.
Harmful if swallowed.
Flammable.
Keep away from sources of ignition.
Follow all Federal, State, and local regulations regarding disposal.

Storage: 15° C  30° C

**Store All Components At
Room Temperature.**

 **Diagnostic BioSystems**
6616 Owens Drive
Pleasanton, CA 94588
U.S.A.
Tel: 1-925-484-3350

C V

P
EmergoEurope
Prinsessegracht 20
2514 AP The Hague
The Netherlands
Tel: (+31)(0) 70 345-8570

Procedure:

1. Place slide in 95% alcohol for 5 minutes.
2. Place slide in 70% alcohol for 5 minutes.
3. Place slide in distilled water for 2 minutes.
4. Apply adequate Modified Mayer's Hematoxylin to completely cover cell smear and incubate for 5 minutes.
5. Rinse slide 1 time in distilled water to remove excess stain.
6. Rinse slide in tap water for 2 minutes..
7. Rinse slide in 2 changes of distilled water.
8. Dip slide several times in 95% alcohol and blot excess off.
9. Apply adequate OG-6 Stain Solution to completely cover cell smear to excess and incubate for 2 minutes.
10. Rinse slide gently using absolute alcohol.
11. Apply adequate EA-50 Stain Solution to completely cover cell smear to excess and incubate for 3 minutes.
12. Rinse slide gently using absolute alcohol.
13. Quickly dehydrate slide in 3 changes of absolute alcohol.
14. Clear slide and mount in synthetic resin.

References:

1. Papanicolaou, G.N. Atlas of Exfoliative Cytology, Harvard University Press, Cambridge, 1954.

Storage: 15° C



30° C

**Store All Components At
Room Temperature.**



Diagnostic BioSystems
6616 Owens Drive
Pleasanton, CA 94588
U.S.A.
Tel: 1-925-484-3350

C V

P

EmergoEurope
Prinsessegracht 20
2514 AP The Hague
The Netherlands
Tel: (+31)(0) 70 345-8570