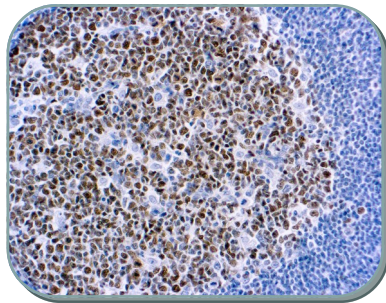


# New Rabbit Monoclonal Antibodies

Diagnostic BioSystems launches new rabbit monoclonal antibodies

Diagnostic  
BioSystems



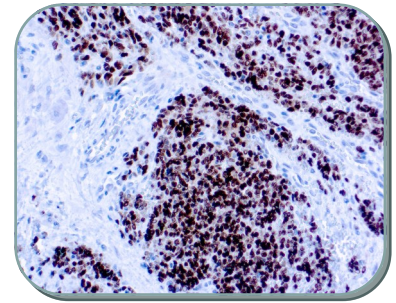
**BCL-6**

## **Bcl-6 (Follicular Lymphoma Marker)**

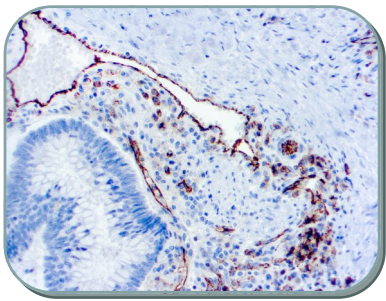
An important prognostic marker in diffuse large B-cell lymphomas distinguishing classical Hodgkin lymphoma from nodular lymphocyte predominant Hodgkin lymphoma (NLPHL).

## **NKX2.2 (Neuroendocrine & Ewing's Sarcoma Marker)**

A valuable marker for Ewing sarcoma, with a sensitivity of 93% and a specificity of 89%. Aids in the differential diagnosis of small round cell tumors.



**NKX2.2**



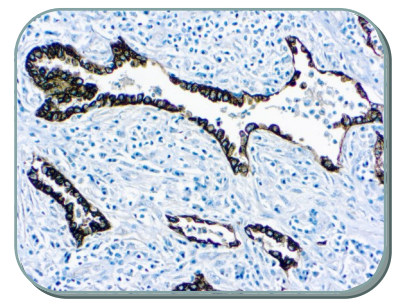
**CD31**

## **CD31/PECAM-1 (Endothelial Cell Marker)**

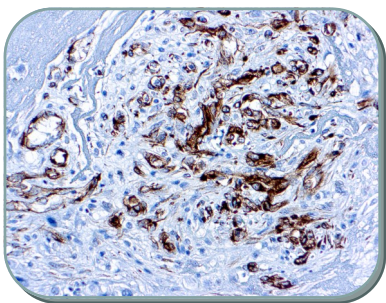
Highly specific & sensitive for vascular endothelial cells. Level of CD31 expression can help to determine the degree of tumor angiogenesis.

## **Cytokeratin, Acidic (Epithelial Marker)**

With broad spectrum anti pan-cytokeratin, it differentiates epithelial tumors from non-epithelial tumors.



**Cytokeratin, Acidic**



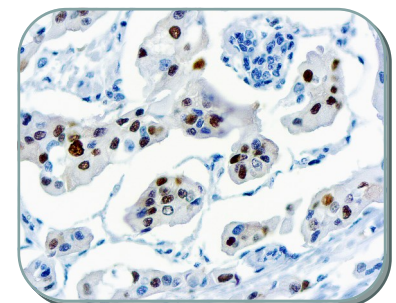
**Wilm's Tumor**

## **Wilm's Tumor 1 (WT1) (Wilm's Tumor & Mesothelial Marker)**

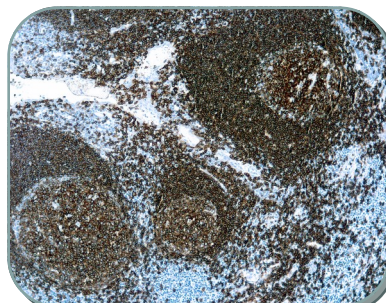
A reliable marker for Wilm's tumor and mesothelioma. Identified in ovarian carcinoma, gonadoblastoma and desmoplastic small round cell tumor.

## **Cyclin D1 (G1-Cyclin & Mantle Cell Marker)**

Cyclin D1 is involved in B-lymphocytic malignancy particularly mantle cell lymphoma (>90%). Cyclin D1 is also expressed in hairy cell leukemia and in a subtype of CD20 positive multiple myeloma.



**Cyclin D1**



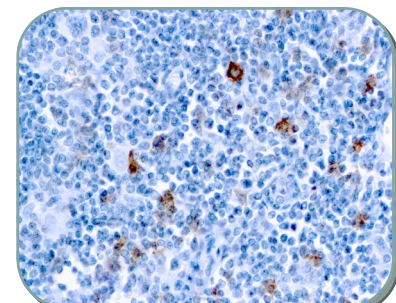
**CD20**

## **CD20 ( B-Cell Marker)**

CD20 is expressed in the large majority of cases of B-cell leukemia/lymphoma. Weak expression has been demonstrated in a subpopulation of T-cells, but not in any other cell type.

## **CD30 (Hodgkin & Reed-Sternberg Cell Marker)**

CD30 is expressed in classical Hodgkin's disease (cHD), anaplastic large cell lymphoma (ALCL), anaplastic variant of diffuse large B-cell lymphoma (av-DLBCL), and CD30 positive cutaneous lymphoprolifera disorder.



**CD30**

# Order Information

Diagnostic  
BioSystems



Antibody	Clone	Status	Cat No.
Caldesmon, HMW	DBR16.2	IVD	RMAB089/RMPD089
NKX2.2	DBR16.3	IVD	RMAB085/RMPD085
CD31	DBR16.4	IVD	RMAB088/RMPD088
Cytokeratin, Acidic	DBR16.5	IVD	RMAB087/RMPD087
Bcl-6	DBR16.6	IVD	RMAB091/RMPD091
MART-1/Melan-A	DBR16.7	IVD	RMAB092/RMPD092
Calponin-1	DBR16.8	IVD	RMAB093/RMPD093
Wilm's Tumor 1	DBR16.9	IVD	RMAB094/RMPD094
CD20	DBR16.10	IVD	RMAB095/RMPD095
CK7	DBR16.11	IVD	RMAB096/RMPD096
CD30	DBR16.12	IVD	RMAB097/RMPD097
CD1a	DBR16.13	IVD	RMAB096/RMPD096
CA19.9	DBR16.14	IVD	RMAB099/RMPD099
CD15	DBR16.16	IVD	RMAB101/RMPD101
Glypican-3	DBR16.17	IVD	RMAB102/RMPD102
Ksp-Cadherin	DBR16.18	IVD	RMAB103/RMPD103
CD99	DBR16.19	IVD	RMAB104/RMPD104
TdT	EP266	IVD	RMAB084/RMPD084
CD105	EP274	IVD	RMAB090/RMPD090
CD4	EP204	IVD	RMAB083/RMPD083
p504s	13H4	IVD	RMAB078/RMPD078

**For more information contact us at:**

**Diagnostic BioSystems, Inc.**

Pleasanton, CA 94588

Phone: 925 484 3350

Toll free: 888 896 3350

Fax: 925 484 3390

orders@dbiosys.com

customersupport@dbiosys.com