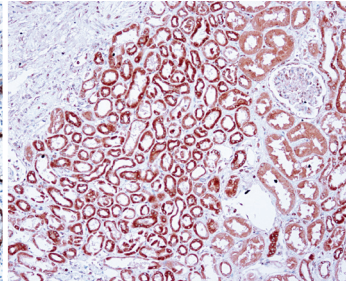
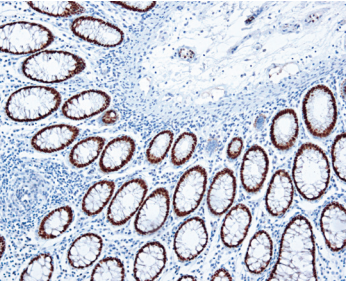


No Tricks Here...

... Just Sensitive, Precise and Accurate

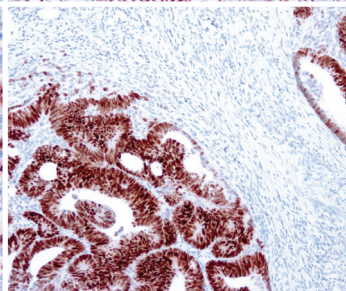
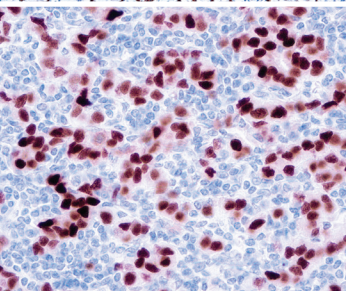
Rabbit Monoclonal Antibodies






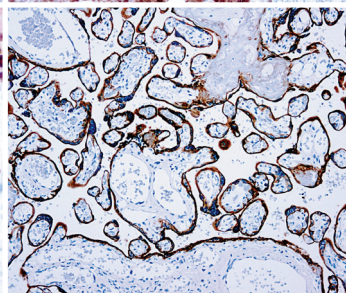
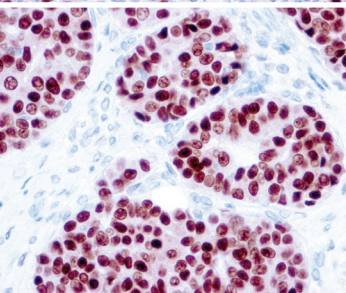
 L: Human FFPE colon carcinoma stained with anti-Cdx2 (RMAB 059).

 R: Human FFPE kidney stained with anti-VEGF (RMPD 021).



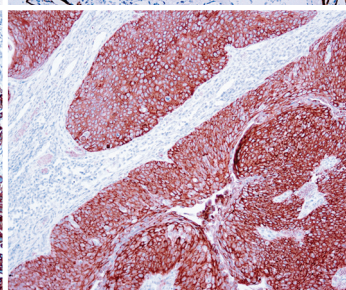
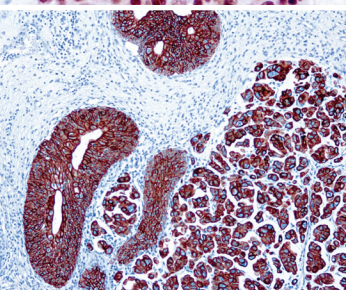
 L: Human FFPE breast carcinoma stained with anti-Progesterone Antibody (RMAB 052).

 R: Human FFPE colon carcinoma stained with anti-p53 (RMAB 067).




 L: Human FFPE breast carcinoma stained with anti-Estrogen Receptor Alpha (RMAB 051).

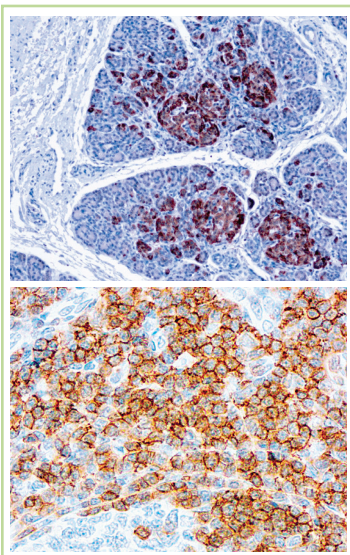
 R: Human FFPE placenta stained with anti-EGFR (RMAB 064).



 L: Human FFPE carcinoma stained with anti-Cytokeratin 7 (RMAB 063).

 R: Human FFPE squamous lung carcinoma stained with anti-CK 5/6 (RMAB 055).

Benefits of Diagnostic BioSystems Rabbit Monoclonal Antibodies



- Clean Crisp Stain
- High Specificity
- High Sensitivity
- Diverse Epitope Recognition
- Improved Immune Response to Small-Size Epitopes
- Minimal Background

 T: Human FFPE pancreas stained with anti-Chromogranin A (RMAB 066).

 B: Human FFPE tonsil stained with anti-CD3 (RMPD 005).



View our complete list of
Rabbit Monoclonals at:

<http://www.dbiosys.com/products/primary-antibodies>

Rabbit Monoclonal Antibody	Clone	Catalog No	Volume
CD21	EP64	RMAB 073	0.5mL
		RMPD 073	6mL
CD31	EP78	RMAB 057	0.5mL
		RMPD 057	6mL
CD45	EP68	RMAB 054	0.5mL
		RMPD 054	6mL
CD99	EP8	RMAB 050	0.5mL
		RMPD 050	6mL
CD117	EP10	RMAB 039	0.5mL
		RMPD 039	6mL
CD138	EP201	RMAB 040	0.5mL
		RMPD 040	6mL
Cdx2	EP25	RMAB 059	0.5mL
		RMPD 059	6mL
Chromogranin A	EP38	RMAB 066	0.5mL
		RMPD 066	6mL
Cytokeratin 5/6 Cocktail	EP24/EP67	RMAB 055	0.5mL
		RMPD 055	6mL
Cytokeratin 7	EP16	RMAB 063	0.5mL
		RMPD 063	6mL
Cytokeratin 20	EP23	RMAB 060	0.5mL
		RMPD 060	6mL

Rabbit Monoclonal Antibody	Clone	Catalog No	Volume
Epidermal Growth Factor (EGFR)	EP22	RMAB 064	0.5mL
		RMPD 064	6mL
Estrogen Receptor Alpha	EP1	RMAB 051	0.5mL
		RMPD 051	6mL
IgG4	EP138	RMAB 056	0.5mL
		RMPD 056	6mL
Kappa Light Chain	EP171	RMAB 042	0.5mL
		RMPD 042	6mL
Mammaglobin-A	EPR 9092	RMAB 036	0.5mL
		RMPD 036	6mL
MART-1	EP43	RMAB 044	0.5mL
		RMPD 044	6mL
OCT-4	EP143	RMAB 075	0.5mL
		RMPD 075	6mL
p53	EP9	RMAB 067	0.5mL
		RMPD 067	6mL
p120 Catenin	EP66	RMAB 053	0.5mL
		RMPD 053	6mL
Progesterone Receptor	EP2	RMAB 052	0.5mL
		RMPD 052	6mL
Prostate Specific Antigen (PSA)	EP109	RMAB 065	0.5mL
		RMPD 065	6mL



Diagnostic BioSystems

United States (Headquarters)

6616 Owens Drive, Pleasanton, CA 94588, USA
Toll Free: (888) 896-3350, customersupport@dbiosys.com



Contact your distributor
for more information
and visit us at www.dbiosys.com

Europe

Germany
Lake Constance
Cell: +49 7557 929 3915
wolfgang.vogel@dbiosys.com

Mexico

Avenida Aztecas # 95, Casa 4
Colonia Pueblo de los Reyes
Alcaldia Coyoacan
CDMX, C.P. 04330
Cell: +525535709693
a.herrera@dbiosys.com

India

612, Eden Square
St. John's Road
Secunderabad – 500003
Cell: +91 9958293222
anandam@dbiosys.com

Canada

32 Lemsford Drive
Markham, ON L3S 4H4
Cell: +1 416 219 2035
hosna.mujadidi@dbiosys.com