

New Mouse Monoclonal Antibodies

Diagnostic BioSystems launches new mouse monoclonal antibodies

Diagnostic
BioSystems



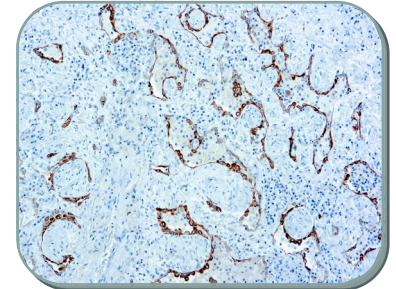
CD3e

CD3e (T-Cell Marker)

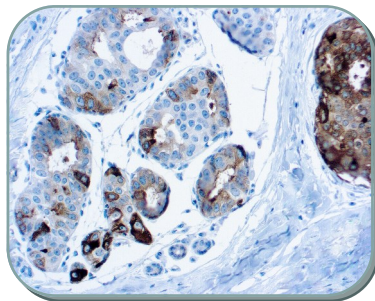
CD3 is a pan-T-cell lineage-restricted antigen, detected in 80-97% of the T-cell lymphomas. CD3 is an important marker in the classification of malignant Lymphomas and Lymphoid Leukemias.

PD-1 (Programmed Cell Death-1 Protein)

PD-1 and PD-L1 are important checkpoints in tumor development PD-1/PD-L1 pathway is a promising target for treating NSCLC PD-1 is receptor expressed primarily on activated T cells.



PD-1



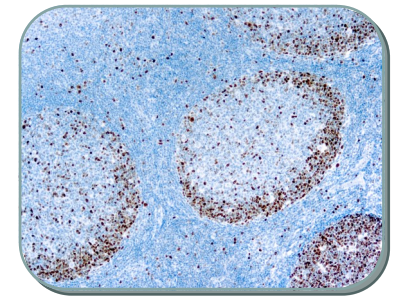
GCDFP-15

GCDFP-15 (Breast Marker)

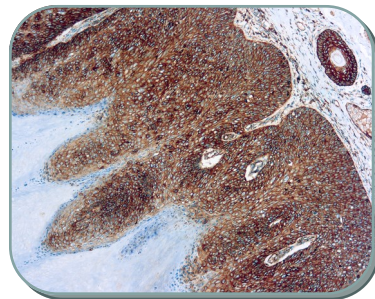
GCDFP can be detected in most breast carcinomas (50-70%). GCDFP is a highly specific and fairly sensitive marker for breast carcinoma. It aids the identification of the unknown primary cancer.

Topoisomerase II alpha (Breast Cancer Marker)

HER-2 and potentially Topoisomerase II alpha are clinically useful parameters in breast cancer. A predictive marker in a population of advanced breast cancer patients.



Topoisomerase II alpha



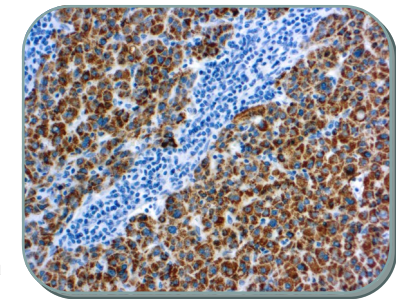
HPV16

HPV-16 (Human Papilloma Virus 16) (Cervical Ca. Marker)

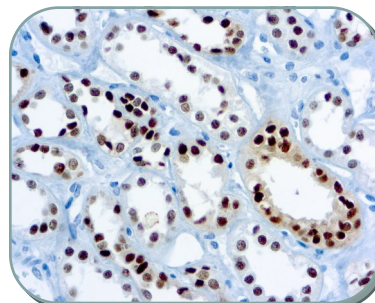
Infection with specific types of HPV 16 and 18 are strongly associated with cervical, vaginal and vulvar malignancies.

HepPar-1 (Hepatocellular Marker)

Determine hepatocellular origin, particularly in panel with alpha-Fetoprotein and CEA or CD10. To differentiate hepatocellular carcinoma from cholangiocarcinoma or metastases to liver, as part of a panel .



HepPar -1



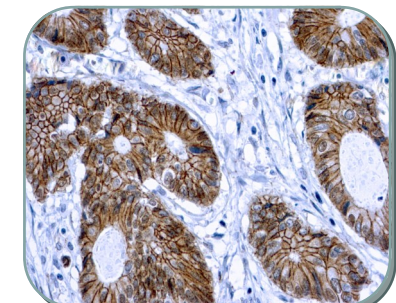
PAX8

PAX8 (Tumor Marker)

PAX8 appears to be currently the most sensitive and specific marker for renal cell carcinoma and ovarian non-mucinous carcinoma. Follicular and papillary thyroid Ca. are virtually always PAX8 positive.

Beta-Catenin (p120)

Mutations and overexpression of β -catenin are associated with various carcinomas, such as colon, thyroid, uterus. Also used to distinguish mesenteric fibromatosis from GIST tumors (-) & sclerosing mesenteritis (-).



B Catenin (p120)

Order Information

Diagnostic
BioSystems



Antibody	Clone	Status	Cat No.
PD-1	DBM15.5	IVD	Mob475/PDM190
AFP	DBM15.19	IVD	Mob489/PDM202
Chromogranin A	DBM15.22	IVD	Mob476/PDM191
CD30	DBM15.26	IVD	Mob500/PDM228
AFP	DBM15.35	IVD	Mob509/PDM237
ACTH	DBM15.38	IVD	Mob512/PDM247
Growth Hormone	DBM15.41	IVD	Mob516/PDM250
Ferritin Light Chain	DBM15.42	IVD	Mob516/PDM251
Lewis Y	DBM15.43	IVD	Mob517/PDM252
Villin	DBM15.44	IVD	Mob518/PDM253
Ep-CAM	DBM15.46	IVD	Mob520/PDM255
HPV16	DBM15.47	IVD	Mob521/PDM256
PAX8	DBM15.48	IVD	Mob522/PDM257
E-Cadherin	DBM15.49	IVD	Mob523/PDM258
HepPar-1	DBM15.50	IVD	Mob524/PDM259
CD3e	DBM15.51	IVD	Mob525/PDM260
GCDFP-15	DBM15.52	IVD	Mob526/PDM261
Desmoglein-1	DBM15.53	IVD	Mob527/PDM262
KBA.62	DBM15.54	IVD	Mob528/PDM263
Beta Catenin (p120)	DBM15.55	IVD	Mob529/PDM264



Diagnostic
BioSystems

United States (Headquarters)

6616 Owens Drive, Pleasanton, CA 94588, USA
Toll Free: (888) 896-3350, customersupport@dbiosys.com



Contact your distributor
for more information
and visit us at www.dbiosys.com

Europe

Germany
Lake Constance
Cell: +49 7557 929 3915
wolfgang.vogel@dbiosys.com

Mexico

Avenida Aztecas # 95, Casa 4
Colonia Pueblo de los Reyes
Alcaldia Coyoacan
CDMX, C.P. 04330
Cell: +525535709693
a.herrera@dbiosys.com

India

612, Eden Square
St. John's Road
Secunderabad – 500003
Cell: +91 9958293222
anandam@dbiosys.com

Canada

32 Lemsford Drive
Markham, ON L3S 4H4
Cell: +1 416 219 2035
hosna.mujadidi@dbiosys.com