



Diagnostic BioSystems

Advanced Tissue Diagnostics. Trusted Solutions.

OVARIAN CANCER MARKERS

Novel Antibodies for Ovarian Cancer

Novel Antibodies Including Anti-SALL4, Anti-BRCA1, Anti-CA 125, Anti-PAX8 and Anti- HCG available for Ovarian Cancer

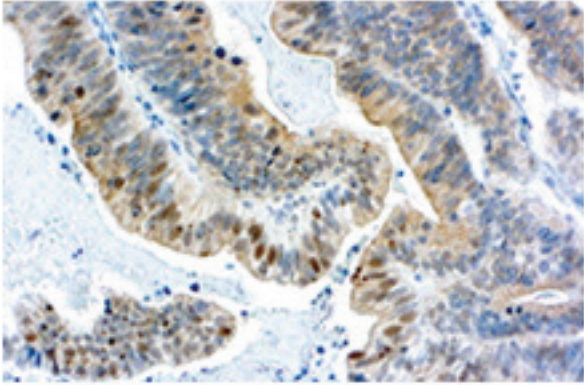
Ovarian cancer ranks fifth in cancer deaths among women, accounting for more deaths than any other cancer of the female reproductive system. A woman's risk of getting ovarian cancer during her lifetime is about 1 in 78. Her lifetime chance of dying from ovarian cancer is about 1 in 108. The American Cancer Society estimates for ovarian cancer in the United States for 2020 are:

- About 21,750 women will receive a new diagnosis of ovarian cancer.
- About 13,940 women will die from ovarian cancer.

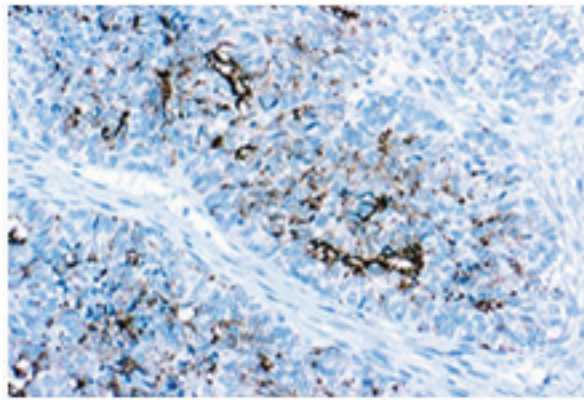
Tumor Marker	Type of Ovarian Malignancy
Sall4	Distinguishes ovarian yolk sac tumor (SALL4+) from clear cell carcinoma (SALL4-)
CA125	Marker of first choice for epithelial ovarian malignancy
HCG	Marker of first choice for Choriocarcinoma ovary
AFP	Marker of first choice for endodermal sinus tumor of ovary
HCG and /or AFP	Mixed gem cell tumor of ovary

DBS' comprehensive Ovarian panel includes novel rabbit monoclonal and mouse monoclonal antibodies. These antibodies ensure sensitivity and specificity of IHC tests. As a result, pathologists and oncologists can have rapid, precise results and an accurate diagnosis to determine an effective treatment for their patients.

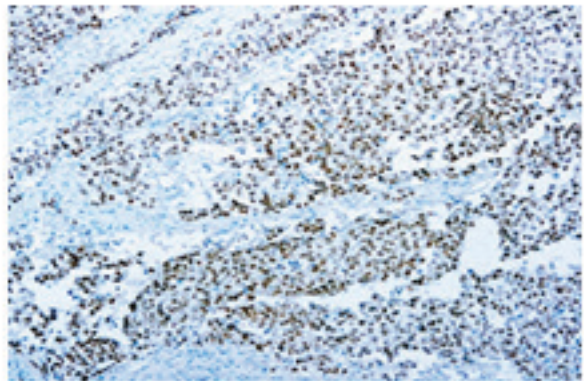
DBS Ovarian Cancer Markers



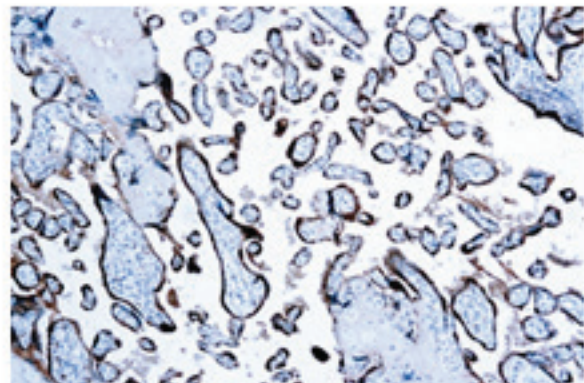
Ovarian carcinoma stained with anti-BRCA1 using DAB



Ovarian carcinoma stained with anti-CA125 using DAB



Testis stained with anti-SALL4 using DAB



Placenta stained with anti-HCG using DAB

BRCA1 Clone: GLK-2 Cat. No.: Mob424

Immunostaining in high-grade serous ovarian carcinomas useful to stratify patients for germline genetic testing (loss of staining is abnormal)

- BRCA mutations cause 90% of hereditary cases of ovarian carcinomas, which account for 10% of all ovarian carcinomas
- Usually associated with serous cystadenocarcinoma.

CA125 OV185:1 (M) Cat. No.: Mob 110 PDM 323

Cancer antigen 125 (CA-125) is a protein encoded by MUC16 gene, used as a tumor marker, because it is 79% sensitive for ovarian cancer. CA 125 is a useful tumor marker for ovarian epithelial malignancies, in immunohistochemistry to confirm ovarian origin of tumor. However, CA 125 has been described in other neoplasms such as seminal vesicle and anaplastic lymphomas.

SALL4 Clone: 6E3 (M) Cat. No.: Mob 591 PDM 591

Cancer antigen 125 (CA-125) is a protein encoded by MUC16 gene, used as a tumor marker, because it is 79% sensitive for ovarian cancer. CA 125 is a useful tumor marker for ovarian epithelial malignancies, in immunohistochemistry to confirm ovarian origin of tumor. However, CA 125 has been described in other neoplasms such as seminal vesicle and anaplastic lymphomas.

Human Chorionic Gonadotropin (HCG) Cat. No: RP007, PDR030 Clone: Poly (R)

This antibody is specific for reacts with hCG. It's useful marker for Ovary Germ cell tumors and Embryonal carcinoma. In clinical the Normal AFP, HCG and LDH levels help rule out more common germ cell tumors

α -Fetoprotein (AFP) Clone: C3 (M) Cat. No.: Mob129, PDM057

ERG or ETS-related gene is a member of the ETS transcription factor family. Recent studies have observed ERG as a frequently overexpressed proto-oncogene present in the majority of prostate cancer cases, often found fused with the TMPRSS2 gene. The presence of the TMPRSS2: ERG fusion product has been associated with aggressive forms of prostate cancer.

PAX-8 Clone: 4H7B3 (M) Cat. No.: PDM180

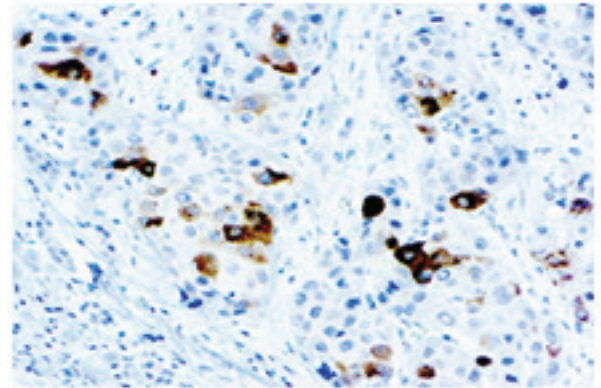
PAX-8 is expressed in a high percentage of renal cell carcinomas and ovarian cancers. This mouse monoclonal PAX-8 antibody [BC12] has been designed to target restricted epitopes and exhibits higher specificity and provides sharper staining than the PAX-8 rabbit polyclonal antibody. Unlike the polyclonal PAX-8, this mouse monoclonal antibody does not stain B-cells, and does not recognize epitopes of pancreatic origin and neuroendocrine cells in stomach and colon; thus providing superior specificity. The expression of the mouse monoclonal PAX-8 targets antigens found in normal kidney, thyroid and cervix, but not normal ovary. IHC positive stain on Ovarian carcinoma, except mucinous types.

Cytokeratin 7 Clone: OV-TL 12/30 (M) Cat. No: Mob057 PDM097

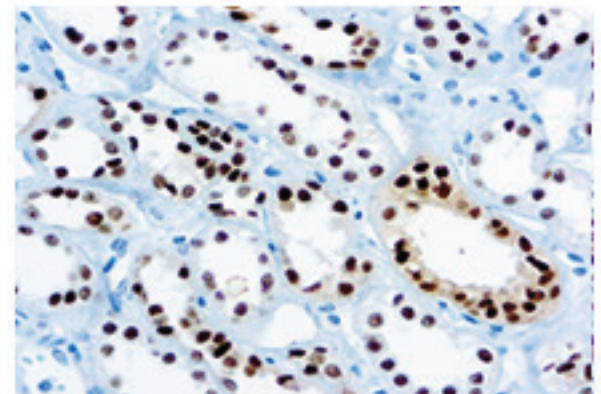
Cytokeratin 7 is expressed in epithelial cells of ovary, lung and breast. The antibody OVTL 12/30 is an excellent tool in the differential diagnosis of malignant cells and to determine primary tumor localization. It stains a 54kD protein band of cytoskeletal proteins from cell lines in one and two dimensional immunoblots.

Cytokeratin, Pan (AE1/AE3) Cat. No.: Mob190, PDM072 Clone: AE1/AE3 (M)

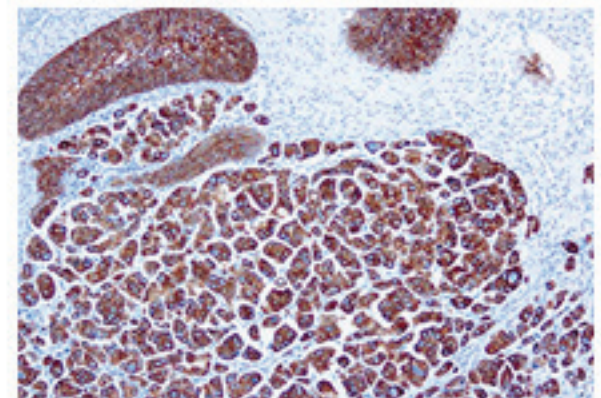
This AE1/AE3 antibody cocktail recognizes most of the acidic (Type I) keratins as well as basic (Type II). It recognizes keratin polypeptides of 40, 48, 50, 52, 54, 56.5, 58, 59 and 64 to 67 kDa. In Ovarian sex cord stromal tumors (overall 27% positive stain) and positive stain on Ovary Germ cell tumors and Carcinoid tumor



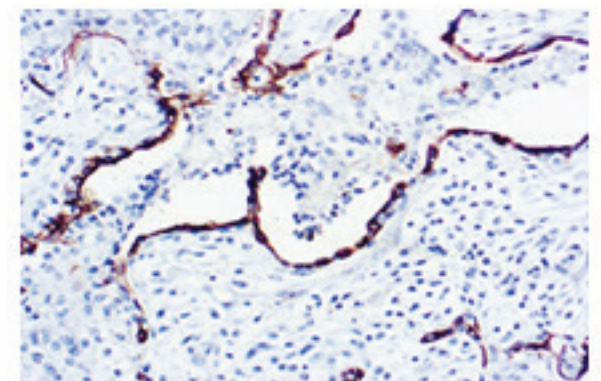
Hepatocellular carcinoma stained with anti-AFP using DAB



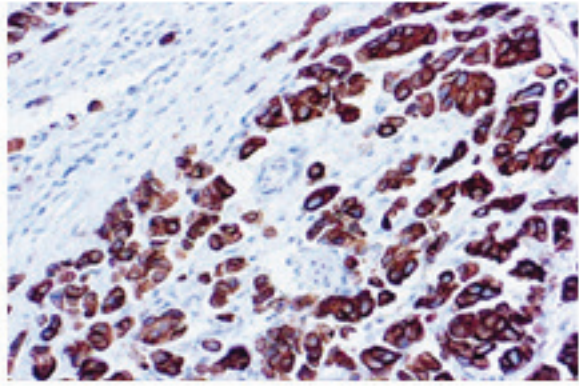
Renal Cell Ca. stained with anti-PAX-8 using DAB



Formalin fixed paraffin embedded human lung stained with Cytokeratin 7



Squamous lung Ca. stained with anti-CK Pan using DAB



Colon Ca. stained with anti-CK20 using DAB

R - Rabbit M - Mouse

Cytokeratin 20 Clone: KS 20.8 (M) Cat. No: Mob123 PDM049

Cytokeratin 20 is less acidic than the other type I cytokeratins and is of particular interest because of its restricted range of expression. This antibody reacts with cytokeratin polypeptide of 46 kDa in immunoblot analyses. Studies have shown that a marked difference exists in the expression of Cytokeratin 20 among various carcinomas. Primary ovarian neoplasm (benign, borderline or malignant) IHC stain on SATB2 negative, CK20 / CDX2 / MUC2 negative or patchy, PAX8 positive.



United States (Headquarters)

6616 Owens Drive, Pleasanton, CA 94588, USA
Toll Free: (888) 896-3350, customersupport@dbiosys.com



Contact your distributor
for more information
and visit us at www.dbiosys.com

Europe

Germany
Lake Constance

Cell: +49 7557 929 3915
wolfgang.vogel@dbiosys.com

Mexico

Avenida Aztecas # 95, Casa 4
Colonia Pueblo de los Reyes
Alcaldia Coyoacan
CDMX, C.P. 04330

Cell: +525535709693
a.herrera@dbiosys.com

India

612, Eden Square
St. John's Road
Secunderabad – 500003

Cell: +91 9958293222
anandam@dbiosys.com

Canada

32 Lemsford Drive
Markham, ON L3S 4H4

Cell: +1 416 219 2035
hosna.mujadidi@dbiosys.com