

CD15 Antibody

Mouse Monoclonal Antibody

The positivity for CD15 is characteristic of Hodgkin's cells in classical Hodgkin's disease (HD). It is expressed in great majority of nodular sclerosis (NS), mixed cellularity (MC), CMLs are regularly CD15 positive. CD15 is expressed in a varying proportion of epithelial tumors such as adenocarcinomas (particularly from breast, lung and colon), renal cell carcinoma, apocrine carcinoma of the skin, papillary and follicular carcinoma of the thyroid, and serous carcinoma of the ovary.

Antibody Name	Cat. No	Clone	Type	Localization	Format	Regulatory
CD15	Mob365/ PDM127	MMA	Mouse Monoclonal	Cell Membrane	Concentrated & Prediluted	IVD

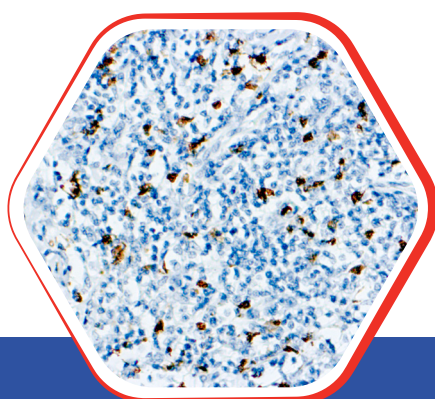
Why CD15 ?

- CD15 is important for the diagnosis of classical HD and characterization of acute leukemia.
- CD15 staining is used to confirm Hodgkin Lymphoma diagnosis, or to differentiate Hodgkin lymphoma (CD15+) from anaplastic large cell lymphoma (usually CD15-)

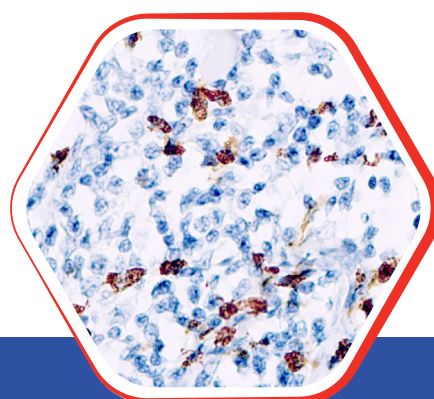


Nordic Immunohistochemical Quality Control Assessment of CD15

Assessment 61- individual results: **Good**



Fomalin fixed paraffin
embedded human Lymph
node stained with CD15 10x



Fomalin fixed paraffin
embedded human Lymph
node stained with CD15 25x

Diagnostic BioSystems

6616 Owens Drive
Pleasanton, CA 94588, USA
T: 925-484-3350
www.dbiosys.com

Toll Free: 888-896-3350
customersupport@dbiosys.com