

CD45 Antibody

Mouse Monoclonal Antibody

CD45 is detected in the large majority of haematolymphoid neoplasms, i.e., leukaemias and malignant lymphomas. Overall, about 90% of malignant lymphomas are CD45 positive. The proportion is lower among precursor B-cell neoplasms (80% of B-ALL) and large cell anaplastic lymphomas, and only about 10% of plasmacytic neoplasms are positive. In Hodgkin lymphoma, the L&H cells in the LP-type are always positive, while Reed-Sternberg cells in classic Hodgkin lymphoma are negative or only show a faint cytoplasmic staining. CD45 is also detected in virtually all cases of mast cell neoplasms, and true histiocytic and dendritic cell neoplasms, except for fibroblastic variants.

Antibody Name	Cat. No	Clone	Type	Localization	Format	Regulatory
CD45	Mob040/ PDM009	2B11 & PD7/26	Mouse Monoclonal	Cell membrane	Prediluted & Concentrated	IVD

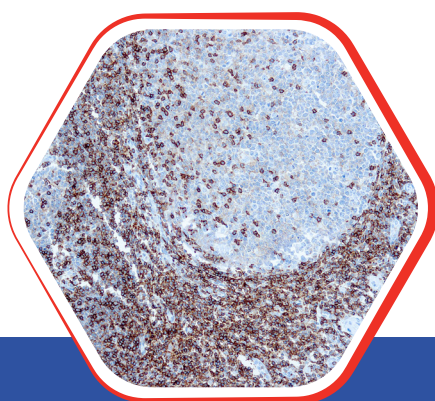
Why CD45 ?

- Confirm presence of inflammatory cells, including intestinal intraepithelial lymphocytes
- Confirm hematopoietic nature of tumors
- Assist in classification of lymphomas and leukemias

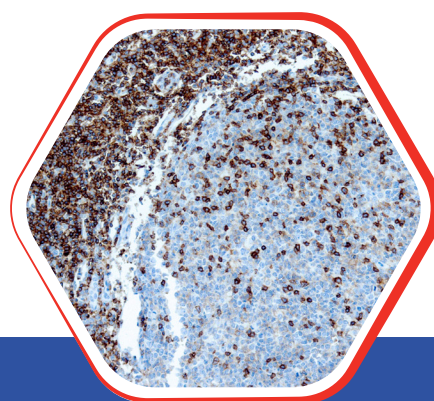


Nordic Immunohistochemical Quality Control Assessment of CD45

Reassessment B59-individual results: **Optimal**



Formalin fixed paraffin embedded
human Tonsil stained with CD45
10x



Formalin fixed paraffin embedded
human Tonsil stained with CD45
25x

Diagnostic BioSystems

6616 Owens Drive
Pleasanton, CA 94588, USA
T: 925-484-3350
www.dbiosys.com

Toll Free: 888-896-3350
customersupport@dbiosys.com