

# CD56 Antibody

## Mouse Monoclonal Antibody

CD56 is extremely useful in the diagnosis of papillary thyroid carcinoma (PTC), including the follicular variant, and to distinguish it from other follicular cell-derived thyroid tumors/lesions. Used to differentiate plasma cells in myeloma (CD56+) from reactive plasmacytosis or MGUS (CD56-), also to predicts poor prognosis for cutaneous lymphoproliferative disorders other than cutaneous T cell lymphoma.

Antibody Name	Cat. No	Clone	Type	Localization	Format	Regulatory
CD56	Mob261/ PDM110	123C3.D5	Mouse Monoclonal	Cell membrane	Concentrated & Prediluted	IVD

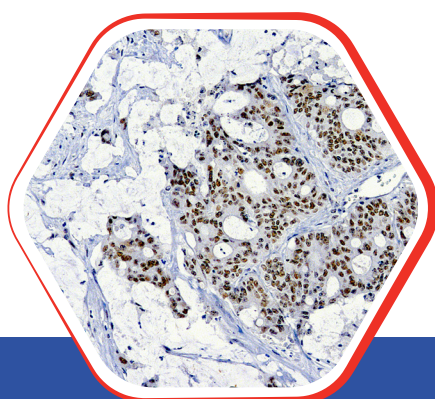
## Why CD56 ?

- CD56 is the prototypic marker of NK cells (80-90%), and NK/T-cell lymphomas
- To differential diagnosis of Myeloid leukemic cells (CD56+) with normal myeloid cells (CD56-)
- To differential non-papillary thyroid tumors (CD56+) with papillary thyroid carcinoma (CD56-)
- To differential Schwannoma (CD56+) with neurofibroma (CD56-)

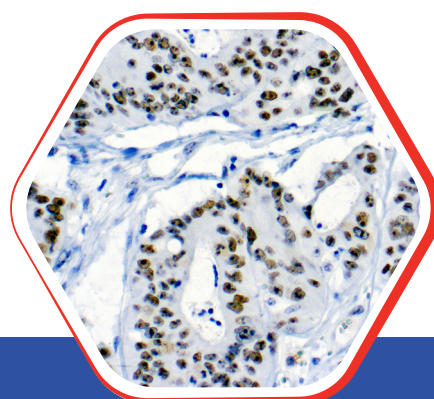


### Nordic Immunohistochemical Quality Control Assessment of CD56

Assessment 61- individual results: **Good**



Fomalin fixed paraffin  
embedded human Colon Ca.  
stained with CD56 10x



Fomalin fixed paraffin  
embedded human Colon Ca.  
stained with CD56 40x

## Diagnostic BioSystems

6616 Owens Drive  
Pleasanton, CA 94588, USA  
T: 925-484-3350  
www.dbiosys.com

Toll Free: 888-896-3350  
customersupport@dbiosys.com