

Cytokeratin 7 Antibody

Mouse Monoclonal Antibody

Cytokeratin 7 is expressed in epithelial cells of ovary, lung, and breast. It is often used in conjunction with cytokeratin 20 and CDX-2 in distinguishing pulmonary, ovarian and breast carcinomas (CK7+) from most colon carcinomas (CK7-). The CK7+/CK20- pattern was observed for 95% of metastatic lesions biopsied in patients with primary lung cancer.

Antibody Name	Cat. No	Clone	Type	Localization	Format	Regulatory
CK7	Mob057/ PDM097	OV-TL-12/30	Mouse Monoclonal	Cytoplasmic	Concentrated & Prediluted	IVD

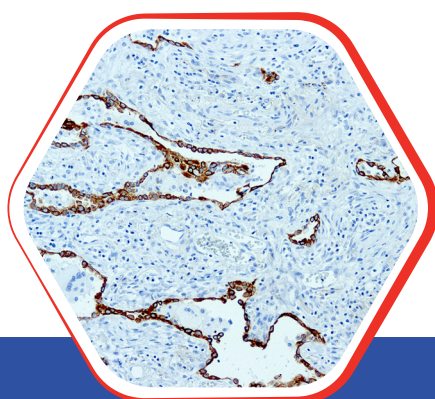
Why CK7 ?

- CK7 expression in esophageal squamous cell carcinoma is an independent prognostic factor for poor overall survival.
- Colorectal tumor cells expressing CK7 may demonstrate invasive capability with metastatic potential.

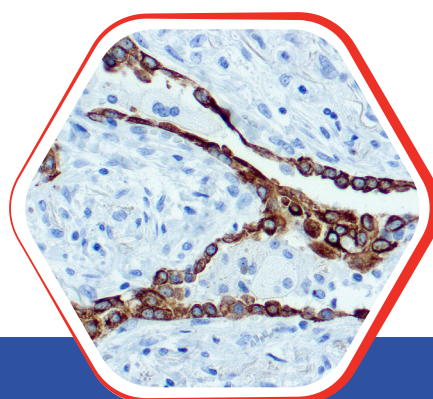


Nordic Immunohistochemical Quality Control Assessment of Cytokeratin 7

Assessment B62- individual results: **Optimal**



Fomalin fixed paraffin
embedded human Sq Ca Lung
stained with Cytokeratin 7 10x



Fomalin fixed paraffin
embedded human Sq Ca Lung
stained with Cytokeratin 7 25x

Diagnostic BioSystems

6616 Owens Drive
Pleasanton, CA 94588, USA
T: 925-484-3350
www.dbiosys.com

Toll Free: 888-896-3350
customersupport@dbiosys.com