

CK8/18 Antibody

Mouse Monoclonal Antibody

CK8/18 useful for the identification of most adenocarcinomas and some squamous cell carcinomas. CK8/18 expression patterns may also aid in the classification of tumors of unknown origin and poorly differentiated carcinomas. Cytokeratin 8 and 18 are expressed in most simple and glandular epithelium, such as thyroid, female breast, gastrointestinal tract, and respiratory tract. In cancer tissues, adenocarcinomas express these proteins, but keratinizing squamous cell carcinomas do not. Antibodies to CK8 and CK18 may be utilized in the classification of tumors of epithelial origin.

Antibody Name	Cat. No	Clone	Type	Localization	Format	Regulatory
CK8/18	Mob189/ PDM070	5D3	Mouse Monoclonal	Cytoplasmic	Prediluted & Concentrated	IVD

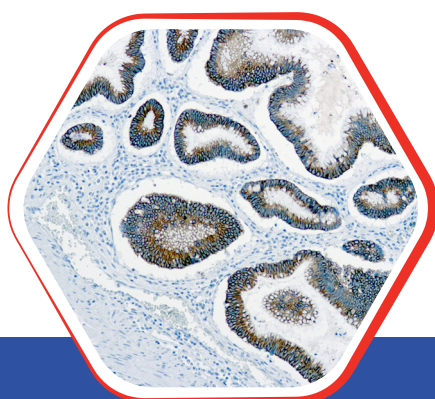
Why CK8/18?

- Various CK8/CK18 mutations may increase susceptibility to liver disease.
- Serum tumor marker for breast cancer and T3/T4 bladder carcinoma.
- Loss of expression in breast carcinoma may be a poor prognostic factor.
- CK18/CK8 expression correlated with progression of oesophageal squamous cell carcinoma.

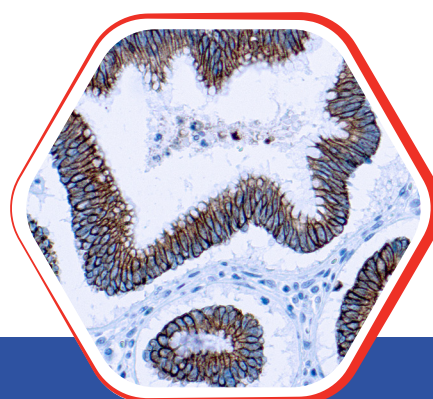


Nordic Immunohistochemical Quality Control Assessment of CK8/18

Reassessment 57 - individual results: **Good**



Paraffin embedded human
Adeno Colon Ca stained with
CK 8/18 10x



Paraffin embedded human
Adeno Colon Ca stained with
CK 8/18 25x

Diagnostic BioSystems

6616 Owens Drive
Pleasanton, CA 94588, USA
T: 925-484-3350
www.dbiosys.com

Toll Free: 888-896-3350
customersupport@dbiosys.com