

EpCAM (Epithelial Antigen) Antibody

Mouse Monoclonal Antibody

Ep-CAM is found in most adenocarcinomas of most sites (50-100% in various studies) as well as neuroendocrine tumors, including small cell carcinoma. Renal cell carcinoma and hepatocellular carcinoma stain in about 30% of the cases. Squamous cell carcinoma of endoderm and mesoderm is usually Ber-EP4 positive, while that of ectoderm is negative.

Antibody Name	Cat. No	Clone	Type	Localization	Format	Regulatory
EpCAM	Mob406/ PDM131	Ber-EP4	Mouse Monoclonal	Cell membrane	Prediluted & Concentrated	IVD

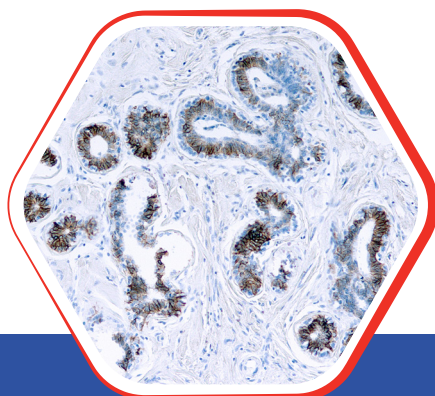
Why EpCAM?

- Ep-CAM can be of great help in the differential diagnosis of malignant involvement in the peritoneal and pleural cavities.
- Useful in the distinction between squamous cell and basal cell or basosquamous carcinoma.
- Ber-Ep4 or MOC-31 used in the demonstration of epithelial cell differentiation in cases where anti-cytokeratins do not produce a clear-cut positivity or in cases where a false positivity for cytokeratin cannot be excluded, such as in sub mesothelial cells.

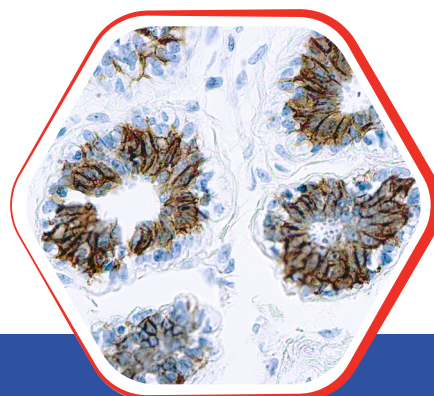
Nordic Immunohistochemical Quality Control Assessment of EpCAM



Reassessment 56 - individual results: **Good**



Fixed paraffin embedded
human Breast Ca. stained with
EpCAM 10x



Fixed paraffin embedded
human Breast Ca. stained with
EpCAM 10x 40x

Diagnostic BioSystems

6616 Owens Drive
Pleasanton, CA 94588, USA
T: 925-484-3350
www.dbiosys.com

Toll Free: 888-896-3350
customersupport@dbiosys.com