

Estrogen Receptor Antibody

Mouse Monoclonal Antibody

ER protein is expressed in 60-70% of female breast cancers (ER+/PR- 19-22%; ER+/PR+ 49-53%). Other tumours expressing ER? are meningiomas, salivary gland tumours, some neuroendocrine tumours, and some colorectal and hepatocellular carcinomas.

Antibody Name	Cat. No	Clone	Type	Localization	Format	Regulatory
Estrogen Receptor	RMAB001/ RMPD001	SP1	Rabbit Monoclonal	Nuclear	Concentrated & Prediluted	IVD

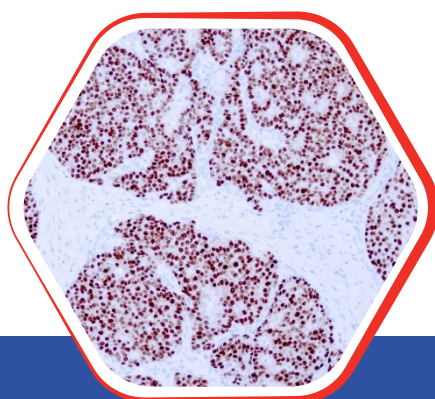
Why ER?

- In breast cancer, predicts response to tamoxifen or other anti-estrogens, Also prognostic marker for survival (ER+ is favorable)
- Relatively specific for breast origin
- Distinguishes endocervical (ER-) from endometrial (ER+) adenocarcinomas

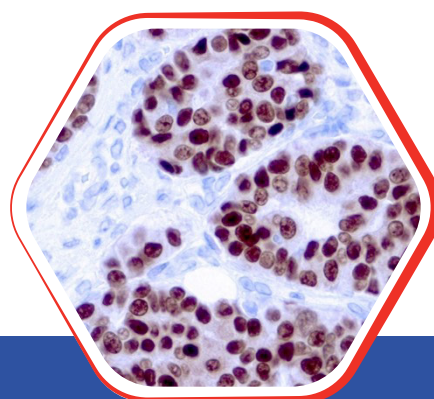
Nordic Immunohistochemical Quality Control Assessment of Estrogen Receptor



Assessment B24, B30, B31 - individual results: **Optimal**
Assessment B26,27,28,29,32 - individual results: **Good**



Fomalin fixed vparaffin
embedded human breast ca.
stained with ER 10x



Fomalin fixed vparaffin
embedded human breast ca.
stained with ER 25x

Diagnostic BioSystems

6616 Owens Drive
Pleasanton, CA 94588, USA
T: 925-484-3350
www.dbiosys.com

Toll Free: 888-896-3350
customersupport@dbiosys.com