

HER-2 Antibody

Rabbit Monoclonal Antibody

In tumors, HER-2 is over-expressed in 15-25% of primary breast cancers. Metastases usually have the same amplification status as the primary tumors. HER-2 amplification and over-expression are typical features of hormone receptor negative, rapidly growing histologic grade 2-3 tumors. HER-2 amplification and over-expression can also be found in intestinal type gastric and gastroesophageal carcinomas, ovarian carcinomas, high grade endometrial carcinomas and some salivary duct tumors. Low-level copy number increases have been found also in rare cases of lung tumors.

Antibody Name	Cat. No	Clone	Type	Localization	Format	Regulatory
HER-2	RMAB049/ RMPD049	EP3	Rabbit Monoclonal	Cell membrane	Concentrated & Prediluted	IVD

Why HER-2?

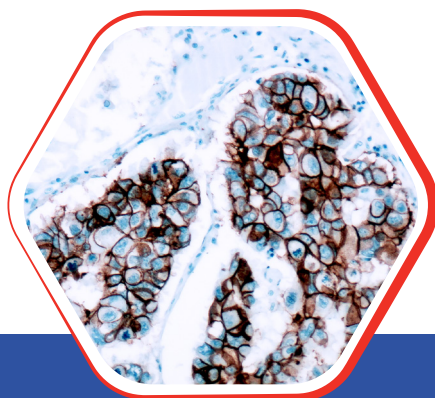
- It is a sole predictive marker for treatment benefits from HER2 targeted therapy
- HER2 gene is amplified in 15%–20% of invasive breast cancers and its amplification is closely linked to HER2 protein overexpression

Nordic Immunohistochemical Quality Control Assessment of HER-2

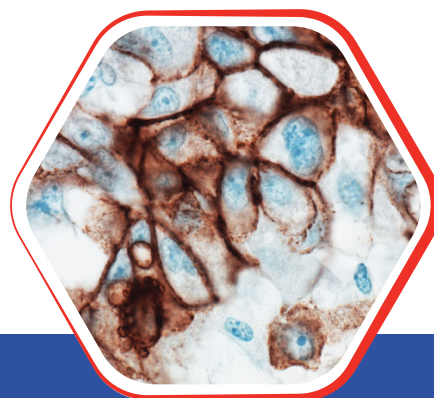


Assessment B23, 24, 25,26, 30, 32 - individual results: **Optimal**

Assessment B22,28,31- individual results: **Good**



Fomalim fixed paraffin
embedded human breast ca.
stained with HER-2 10x



Fomalim fixed paraffin
embedded human breast ca.
stained with HER-2 40x

Diagnostic BioSystems

6616 Owens Drive
Pleasanton, CA 94588, USA
T: 925-484-3350
www.dbiosys.com

Toll Free: 888-896-3350
customersupport@dbiosys.com