

p63 Antibody

Rabbit Monoclonal Antibody

p63 is found in most cases of squamous cell carcinoma (even among low differentiated squamous carcinomas, more than 70% of the cases are positive) as well as adenosquamous carcinoma, urothelial carcinoma, myoepithelial carcinoma, adenoid cystic carcinoma and skin adnexal tumors (cylindroma, eccrine poroma, syringoma, trichoepithelioma, trichilemmoma, spiradenoma).

Antibody Name	Cat. No	Clone	Type	Localization	Format	Regulatory
P63	RMAB086R/ RMPDM086R	DBR16.1	Rabbit Monoclonal	Nuclear	Prediluted & Concentrated	IVD

Why P63

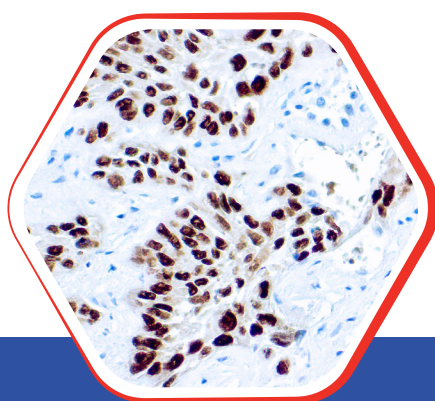


- p63 is a very useful marker for squamous, urothelial, and myoepithelial differentiation.
- Confirm diagnosis of prostatic adenocarcinoma (p63-)
- Rule out invasion in breast tumors by determining presence of myoepithelial cells
- Differentiate cutaneous sweat gland / adnexal carcinoma (p63+) from metastatic breast / adenocarcinoma to skin (p63-) as part of panel

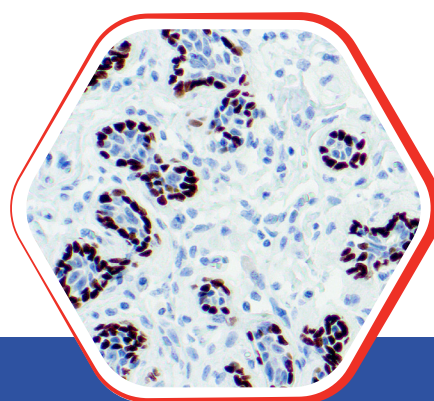


Nordic Immunohistochemical Quality Control Assessment of p63

Reassessment B48,61- individual results: **Optimal**



Formalin fixed paraffin embedded
human Sq lung Ca stained
with p63 25x



Formalin fixed paraffin embedded
human breast ca stained
with p63 25x

Diagnostic BioSystems

6616 Owens Drive
Pleasanton, CA 94588, USA
T: 925-484-3350
www.dbiosys.com

Toll Free: 888-896-3350
customersupport@dbiosys.com