

# Progesterone Receptor Antibody

## Rabbit Monoclonal Antibody

PR is predominantly expressed in tumors of female sex steroid responsive tissues such as the mammary gland, endometrium and the ovary. About half of the breast carcinomas are ER+/PR+. A small fraction (<5%) is ER-/PR+. The ER and PR status has been used for over 20 years as a predictor of breast carcinoma responsiveness to endocrine therapy and as a prognostic indicator for early recurrence. Up to 75% of ER+/PR+ breast carcinomas respond positively to endocrine treatment. ER+/PR- tumors are less responsive, and thus PR status adds information to ER-status.

Antibody Name	Cat. No	Clone	Type	Localization	Format	Regulatory
Progesterone Receptor	RMAB002/ RMPD002	SP2	Rabbit Monoclonal	Nuclear	Concentrated & Prediluted	IVD

## Why PR?

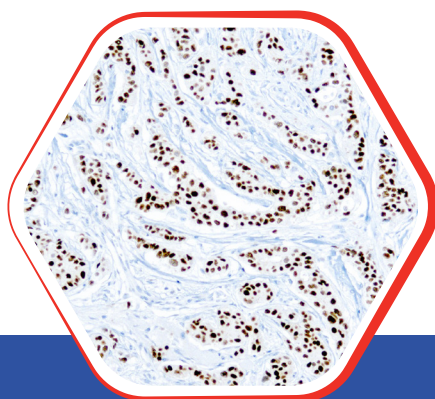
- Diagnosis of PR-positive tumors (often metastasis) and prediction of therapeutic response of breast carcinoma relatively specific for breast origin.
- In combination the ER/PR predict benefit from endocrine therapy both in adjuvant setting and in advanced disease.

### Nordic Immunohistochemical Quality Control Assessment of Progesterone Receptor

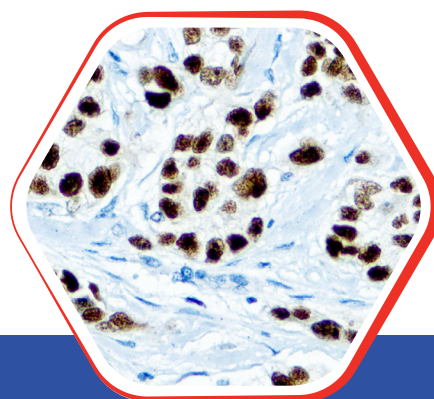


Assessment B24,29,31- individual results: **Optimal**

Assessment B26- individual results: **Good**



Fomalin fixed vparaffin  
embedded human breast ca.  
stained with PR 10x



Fomalin fixed vparaffin  
embedded human breast ca.  
stained with PR 40x

## Diagnostic BioSystems

6616 Owens Drive  
Pleasanton, CA 94588, USA  
T: 925-484-3350  
www.dbiosys.com

Toll Free: 888-896-3350  
customersupport@dbiosys.com