

TTF-1 Antibody

Mouse Monoclonal Antibody

TTF1 is widely expressed in pulmonary adenocarcinomas, the frequency of positive tumors being 60-85%, depending on the clone used. It can be used to differentiate primary lung adenocarcinoma from metastasis of extrapulmonary origin (the subgroup of TTF1 positive gastrointestinal adenocarcinomas usually also stain for cdx2). Differential diagnosis of mucinous lung carcinoma (usually TTF1 negative) requires other markers. The use of TTF1 immunostaining is a valuable adjunct in differential diagnosis of pleural malignancy.

Antibody Name	Cat. No	Clone	Type	Localization	Format	Regulatory
TTF-1	Mob285/ PDM104	8G7G3/1	Mouse Monoclonal	Nuclear	Prediluted & Concentrated	IVD

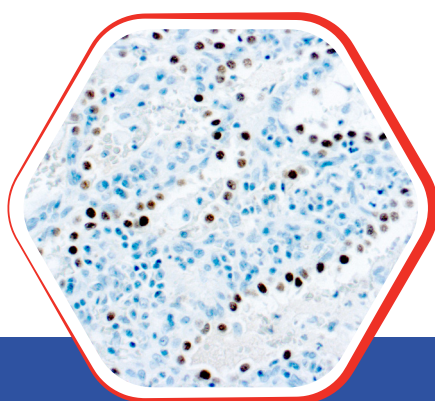
Why TTF-1 ?

- Distinguish primary and metastatic lung carcinoma from nonlung primary tumors, especially for adenocarcinomas or large cell carcinomas.
- Distinguish between cutaneous metastasis of small cell carcinoma and Merkel cell carcinoma (together with dot-like staining of CK20 in Merkel cell carcinoma).

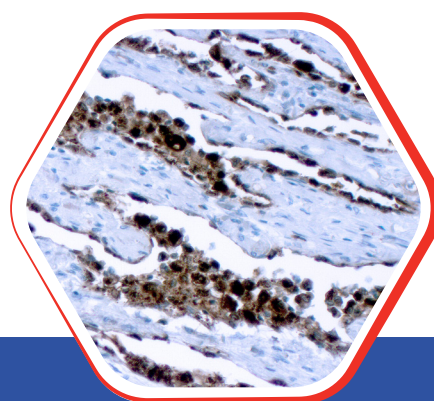


Nordic Immunohistochemical Quality Control Assessment of TTF-1

Assessment B58- individual results: **Good**



Formalin fixed paraffin
embedded human Lung Ca.
stained with TTF-1 10x



Formalin fixed paraffin
embedded human Lung Ca.
stained with TTF-1 25x

Diagnostic BioSystems

6616 Owens Drive
Pleasanton, CA 94588, USA
T: 925-484-3350
www.dbiosys.com

Toll Free: 888-896-3350
customersupport@dbiosys.com