

CD31 Antibody

Mouse Monoclonal Antibody

CD31 is strongly expressed in endothelial cells and weakly expressed in megakaryocytes, platelets, occasional plasma cells, lymphocytes (espc. marginal zone B-cells, peripheral T-cells) and neutrophils. CD31 is expressed in the vast majority of all types of vascular neoplasms, such as hemangioendothelioma, angiofibroma, hemangioma, and angiosarcoma. CD31 is also expressed in most cases of Kaposi sarcoma and epithelioid hemangioendothelioma.

Antibody Name	Cat. No	Clone	Type	Localization	Format	Regulatory
CD31	Mob034/ PDM020	JC/70A	Mouse Monoclonal	Cell Surface	Prediluted & Concentrated	IVD

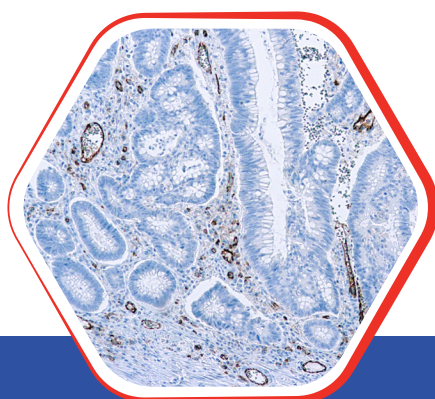
Why CD31



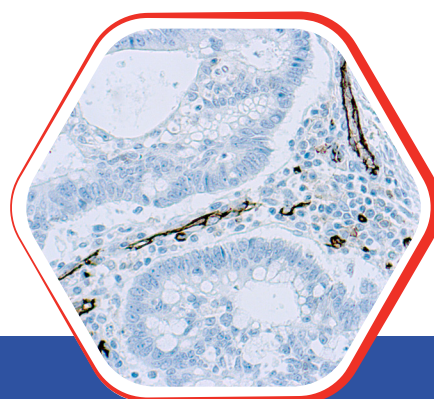
CD31 is most used in the panel for recognizing endothelial cell differentiation in tumours and should be considered a reliable marker for all types of vascular neoplasms.



Nordic Immunohistochemical Quality Control Assessment of CD31
Reassessment 62 - individual results: **Good**



Formalin fixed paraffin
embedded human Colon Ca.
stained with CD31 10x



Formalin fixed paraffin
embedded human Colon Ca.
stained with CD31 25x

Diagnostic BioSystems

6616 Owens Drive
Pleasanton, CA 94588, USA
T: 925-484-3350
www.dbiosys.com

Toll Free: 888-896-3350
customersupport@dbiosys.com