



# Instructions For Use KT 022-IFU

Document #: DS-3015-C

Release Date: 07/02/2024

6616 Owens Drive, Pleasanton, CA 94588 U.S.A. - Tel. (925) 484-3350 - Fax (925) 484-3390 - [www.dbiosys.com](http://www.dbiosys.com)

## Luxol Fast Blue Stain Kit

### Description and Principle

The Luxol Fast Blue Stain Kit is designed for staining myelin/myelinated axons and Nissl substance on formalin fixed, paraffin-embedded tissue. This product is used for identifying the basic neuronal structure in brain or spinal cord sections.

Luxol fast blue is a alcohol soluble copper phthalocyanine dye that binds to lipoproteins found in the myelin sheath of the central nervous system. Tissue is initially overstained by luxol fast blue and dye is removed from gray-matter by differentiating solutions lithium carbonate and 70% alcohol. Cresyl echt violet is used to counterstain nuclei and nissl substance.

### Expected Results

Myelinated Fibers: Blue  
Nissl Substance: Violet  
Nerve Cells: Violet

### Kit Contents

1. Cresyl Echt Violet Solution	2-8° C
2. Luxol Fast Blue Solution	15-30°C
3. Lithium Carbonate Solution (0.05%)	15-30°C
4. Alcohol, Reagent (70%)	15-30°C

### Storage

### Suggested Controls (not provided)

Cerebral Cortex, Spinal Cord

### Uses/Limitations

For In-Vitro Diagnostic use only.  
Do not use if reagents become cloudy or precipitate  
Do not use past expiration date.  
Use caution when handling reagents.  
Non-Sterile  
Intended for FFPE sections cut at 5-10µm.  
This procedure has not been optimized for frozen sections.  
Frozen sections may require protocol modification.

### Storage

Mixed storage conditions. Store according to individual label instructions.

### Safety and Precautions

Please see current Safety Data Sheets (SDS) for this product and components GHS classification, pictograms, and full hazard/precautionary statements. If there is any serious incident that has occurred in relation to the device, please contact the manufacturer: Diagnostic BioSystems Technical Support at (925) 484-3350, extension 2 or [techsupport@dbiosys.com](mailto:techsupport@dbiosys.com). If required, please report to the Competent Authority of the Member State in which the user and/or patient is established.

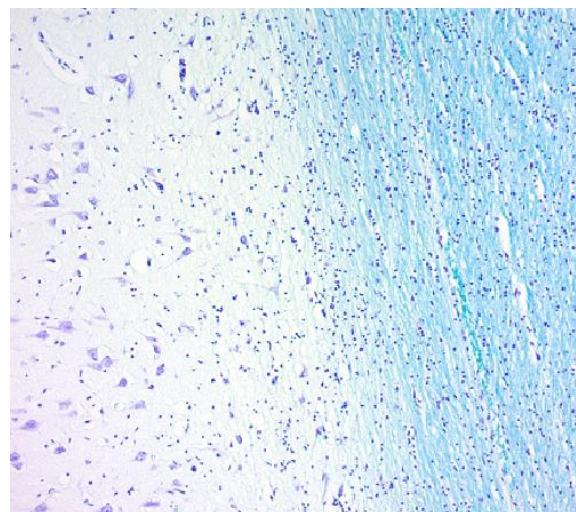
### Procedure

1. Deparaffinize sections if necessary and hydrate to distilled water.
2. Pour Luxol Fast Blue Solution into a staining jar and Incubate slide for 24 hours at room temperature or 2 hours at 60°C. Solution is alcoholic and will readily evaporate at smaller volumes.
3. Rinse thoroughly in distilled water.

4. Differentiate section by dipping in Lithium Carbonate Solution (0.05%) several times (up to 20 seconds).

5. If needed, continue differentiation by repeatedly dipping in Alcohol, Reagent (70%) until gray-matter is colorless and white-matter remains blue.

6. Rinse slide in 2 changes of distilled water.



White-matter and gray-matter of Human Brain stained with Luxol Fast Blue Stain Kit

7. Incubate slide in Cresyl Echt Violet (0.1%) for 2-5 minutes.

8. Rinse quickly in 1 change of distilled water.

9. Dehydrate quickly in 3 changes of absolute alcohol.

10. Clear as desired and mount in synthetic resin.

### References

1. Sheenan, D.C., Hrapchak, B.B. Theory and Practice of Histotechnology, 2nd Edition. Battelle Press, Columbus, OH. Page 262-264. 1980
2. Kluver, H., Barrera, E.A. A Method for the combined staining of cells and fibers in the nervous system. Journal of Neuropathology and Experimental Neurology, 1953, 12: pages 400-403.

Diagnostic BioSystems  
6616 Owens Drive  
Pleasanton, CA, 94588  
Tel: (925) 484 3350  
[www.dbiosys.com](http://www.dbiosys.com)



CH REP   
MedEnvoy Switzerland  
Gotthardstrasse 28  
6302 Zug  
Switzerland



MedEnvoy Global B.V.  
Prinses Margrietplantsoen 33 - Suite 123  
2595 AM The Hague  
The Netherlands