

Bcl-2 Oncoprotein Antibody

Mouse Monoclonal Antibody

Overexpression of Bcl-2 is common in many types of cancer, including non-Hodgkin's lymphoma and leukemias, adenocarcinomas (e.g., prostate, colorectum, stomach, and lung), squamous cell carcinoma, small cell carcinoma, neuroblastoma and various sarcomas. Among the latter, strong Bcl-2 positivity has particularly been demonstrated in gastrointestinal stromal tumor, solitary fibrous tumor, and synovial sarcoma, while fibromatosis and "malignant fibrous histiocytoma" are usually negative.

Antibody Name	Cat. No	Clone	Type	Localization	Format	Regulatory
Bcl-2 oncoprotein	Mob005/ PDM016	124	Mouse Monoclonal	Cell membrane	Prediluted & Concentrated	IVD

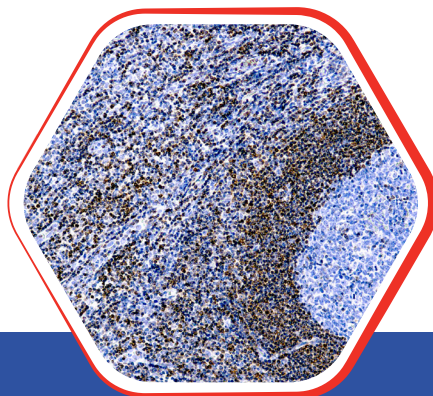
Why Bcl-2 ?

- Distinguish follicular hyperplasia of lymph node (germinal centres BCL2-) from follicular lymphoma (germinal centres BCL2+).
- BCL2 overexpression increase lifespan of B cells; may maintain memory B cells, plasma cells and neurons by prolonging life span without cell division.

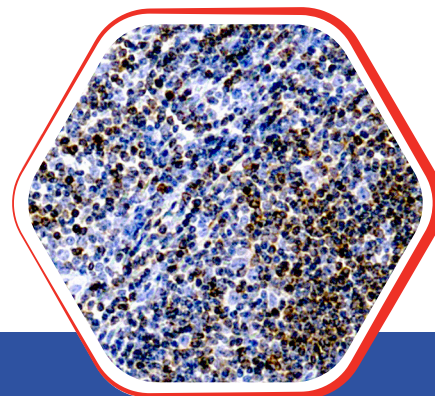


Nordic Immunohistochemical Quality Control Assessment of Bcl-2 Oncoprotein

Assessment Run 73 2025: Individual results: **Optimal**



Formalin fixed paraffin embedded human tonsil stained with Bcl-2 Oncoprotein 10x



Formalin fixed paraffin embedded human tonsil stained with Bcl-2 Oncoprotein 25x

Diagnostic BioSystems

6616 Owens Drive
Pleasanton, CA 94588, USA
T: 925-484-3350
www.dbiosys.com

Toll Free: 888-896-3350
customersupport@dbiosys.com