

E-Cadherin Antibody

Mouse Monoclonal Antibody

Cadherins are a family of calcium-dependent transmembrane cell adhesion glycoproteins. In connecting cells, they comprise a part of the zonula adherens and desmosomes. Each type of cadherin has a specific extracellular binding site and the proteins preferentially interact with themselves in a homophilic manner. Besides cell adhesion, the cadherins are involved in shape, motility and proliferation of cells. ECAD (syn. CD325), 120kDa, chromosome 16q22.1 (CDH1 gene), is a critical regulator of epithelial junction formation. It interacts with the cytoskeleton through a number of associated proteins: The ECAD internal domain binds with alpha, beta, gamma, and p120 catenins to anchor the ECAD complex to the actin cytoskeleton of the cell.

Antibody Name	Cat. No	Clone	Type	Localization	Format	Regulatory
E-Cadherin	Mob550/ PDM182	SPM471	Mouse Monoclonal	Cell membrane	Prediluted & Concentrated	IVD

Why E-Cadherin



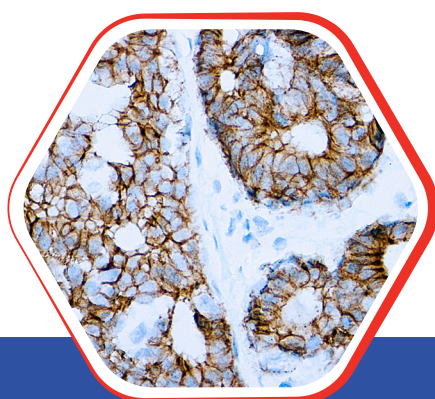
- ECAD is expressed in virtually all epithelial cells with the exception of adrenocortical cells. The expression in liver cells is weaker than in most other epithelia. ECAD is also expressed in melanocytes (adhering to squamous epithelial cells).

- Mesothelial cells and granulosa cells are ECAD negative. Mesenchymal cells and neural crest cells are mostly negative but some types may show a weak reaction. Testicular germinative cells are weakly positive.

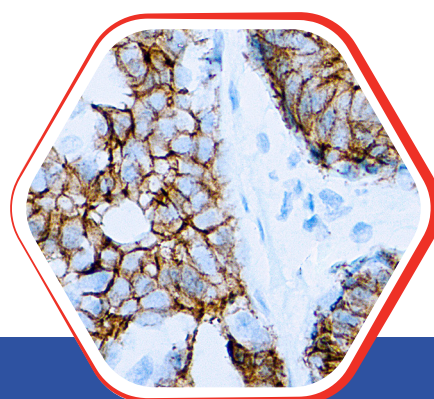


Nordic Immunohistochemical Quality Control Assessment of E-Cadherin

Assessment Run 74 2025: Individual result: **Optimal**



Formalin fixed paraffin embedded
human breast carcinoma stained
with E-Cadherin antibody 10x



Formalin fixed paraffin embedded
human breast carcinoma stained with
E-Cadherin antibody 25x

Diagnostic BioSystems

6616 Owens Drive
Pleasanton, CA 94588, USA
T: 925-484-3350
www.dbiosys.com

Toll Free: 888-896-3350
customersupport@dbiosys.com