

# Estrogen Receptor Antibody

## Rabbit Monoclonal Antibody

ER protein is expressed in 60-70% of female breast cancers (ER+/PR- 19-22%; ER+/PR+ 49-53%). Other tumours expressing ER are meningiomas, salivary gland tumours, some neuroendocrine tumours, and some colorectal and hepatocellular carcinomas.

Antibody Name	Cat. No	Clone	Type	Localization	Format	Regulatory
Estrogen Receptor	RMAB001/ RMPD001	SP1	Rabbit Monoclonal	Nuclear	Prediluted & Concentrated	IVD

### Why Estrogen Receptor?

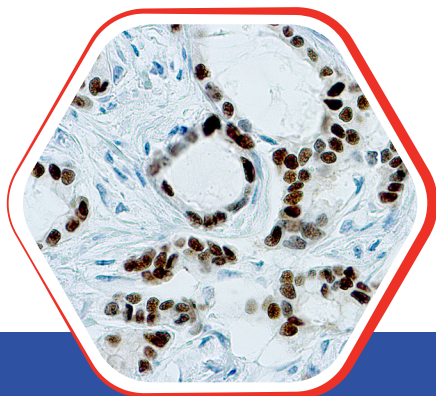


- In breast cancer, predicts response to tamoxifen or other anti-estrogens, Also prognostic marker for survival (ER+ is favorable)
- Relatively specific for breast origin
- Distinguishes endocervical (ER-) from endometrial (ER+) adenocarcinomas

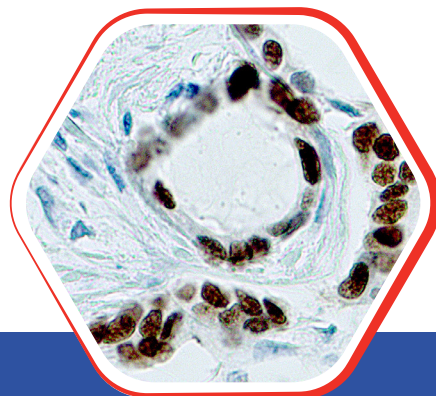


### Nordic Immunohistochemical Quality Control Assessment of Estrogen Receptor

Assessment Run B39 2025: Individual results: **Optimal**



Formalin fixed paraffin embedded human breast carcinoma stained with Estrogen Receptor antibody 10x



Formalin fixed paraffin embedded human breast carcinoma stained with Estrogen Receptor antibody 25x

### Diagnostic BioSystems

6616 Owens Drive  
Pleasanton, CA 94588, USA  
T: 925-484-3350  
[www.dbiosys.com](http://www.dbiosys.com)

**Toll Free: 888-896-3350**  
**[customersupport@dbiosys.com](mailto:customersupport@dbiosys.com)**