

Synaptophysin Antibody

Rabbit Monoclonal Antibody

This antibody recognizes a protein of 38kDa, identified as synaptophysin. It labels normal neuroendocrine cells of human adrenal medulla, carotid body, skin, pituitary gland, thyroid, lung, pancreas, gastrointestinal mucosa, Paneth's cells in the gastrointestinal tract and gastric parietal cells. Neurons in the brain, spinal cord, and retina are also labeled. In combination with anti-chromogranin A and anti-NSE, anti-synaptophysin is very useful in the identification of normal neuroendocrine cells and neuroendocrine neoplasms.

Antibody Name	Cat. No	Clone	Type	Localization	Format	Regulatory
Synaptophysin	RMAB018/ RMPD018	SP11	Rabbit Monoclonal	Cytoplasmic	Prediluted & Concentrated	IVD

Why Synaptophysin

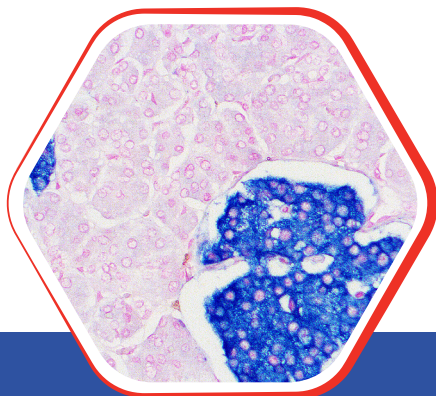


- An integral membrane protein of small synaptic vesicles in brain and endocrine cells.
- Positive in well differentiated neuroendocrine tumor (carcinoid tumor), neuroendocrine carcinoma, neuroblastoma, adrenal cortical tumors, paraganglioma, pheochromocytoma, Merkel cell carcinoma, parathyroid tumors and medullary thyroid carcinoma.

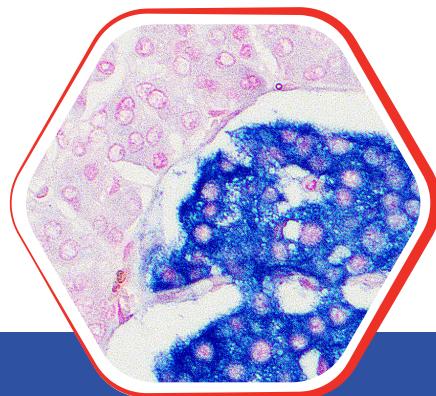


Nordic Immunohistochemical Quality Control Assessment of Synaptophysin

Assessment Run 73 2025 : Individual results: **Good**



Formalin fixed paraffin embedded
human pancreas stained with
Synaptophysin antibody 10x



Formalin fixed paraffin embedded
human pancreas stained with
Synaptophysin antibody 25x

Diagnostic BioSystems

6616 Owens Drive
Pleasanton, CA 94588, USA
T: 925-484-3350
www.dbiosys.com

Toll Free: 888-896-3350
customersupport@dbiosys.com