

CD3 Antibody

Mouse Monoclonal Antibody

CD3 is expressed throughout the T-cell differentiation process. CD3 is a highly specific and sensitive T-cell lineage marker, making it ideal for the immunophenotypic analysis of lymphohaematopoietic malignancies. Clone LN10 is specific for the non-glycosylated epsilon chain of the human CD3 molecule. Clone LN10 recognizes T cells in thymus, bone marrow, peripheral lymphoid tissue and blood and is a pan T cell marker.

Antibody Name	Cat. No	Clone	Type	Localization	Format	Regulatory
CD3	Mob474/ PDM186	LN10	Mouse Monoclonal	Cell Membrane	Prediluted & Concentrated	IVD

Why CD3

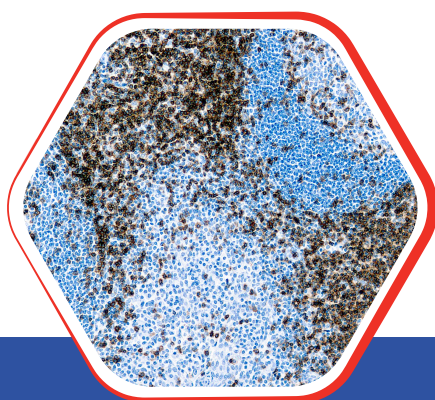


- CD3 positive stain in 80% of T cell lymphomas, NK lymphoma (cytoplasmic, not membranous), lymphomatoid granulomatosis, lymphomatoid papulosis and pre-T ALL (cytoplasmic staining).
- CD3 is most specific T cell antibody, usually to identify T cells in benign and malignant disorders, most antibodies are directed against epsilon chain.

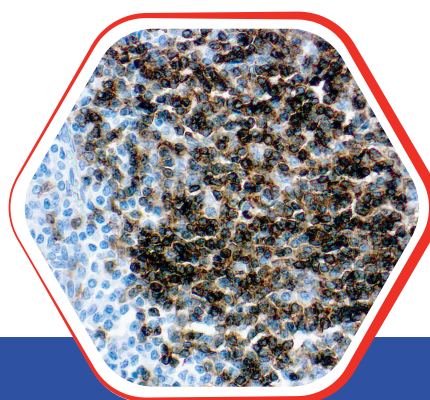


Nordic Immunohistochemical Quality Control Assessment of CD3

Assessment B63- individual results: **Optimal**



Formalin fixed paraffin
embedded human Tonsil.
stained with CD3 10x



Formalin fixed paraffin
embedded human Tonsil.
stained with CD3 25x

Diagnostic BioSystems

6616 Owens Drive
Pleasanton, CA 94588, USA
T: 925-484-3350
www.dbiosys.com

Toll-Free (USA)  : +1 (844) 856-3350
customersupport@dbiosys.com