

# CDX2 Antibody

## Rabbit Monoclonal Antibody

CDX2 is a relatively sensitive and specific marker for "intestinal" adenocarcinomas. In the classification of (adeno-) carcinomas of the unknown primary, CDX2 is an important marker but should always be included in a panel. Also, to identify the origin of neuroendocrine tumors, CDX2 is useful in a panel.

Antibody Name	Cat. No	Clone	Type	Localization	Format	Regulatory
CDX2	RMAB059/ RMPDM059	EP25	Rabbit Monoclonal	Nuclear	Prediluted & Concentrated	IVD

### Why CDX2

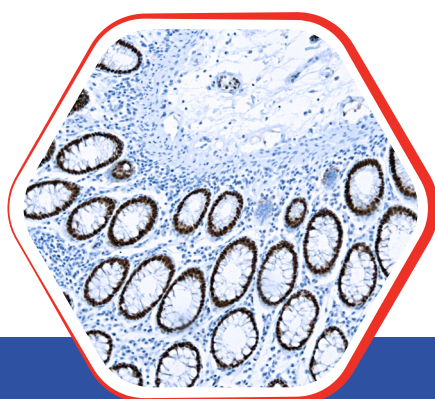


- Specific marker of GI origin for adenocarcinomas, can use to determine origin of metastatic adenocarcinoma as part of panel.
- Distinguish primary bladder adenocarcinoma (CDX2-, villin-) from colorectal carcinoma extending / metastatic to bladder (CDX2+, villin+).

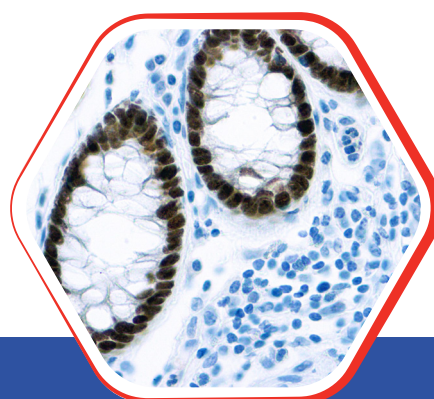


#### Nordic Immunohistochemical Quality Control Assessment of CDX2

Reassessment B61- individual results: **Optimal**



Formalin fixed paraffin embedded  
human colon stained with  
CDX2 10x



Formalin fixed paraffin embedded  
human colon stained with  
CDX2 40x

#### Diagnostic BioSystems

6616 Owens Drive  
Pleasanton, CA 94588, USA  
T: 925-484-3350  
[www.dbiosys.com](http://www.dbiosys.com)

Toll-Free (USA)  : +1 (844) 856-3350  
[customersupport@dbiosys.com](mailto:customersupport@dbiosys.com)