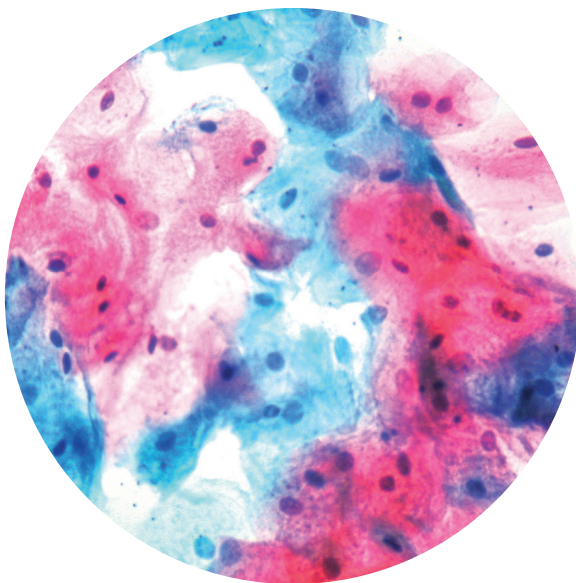


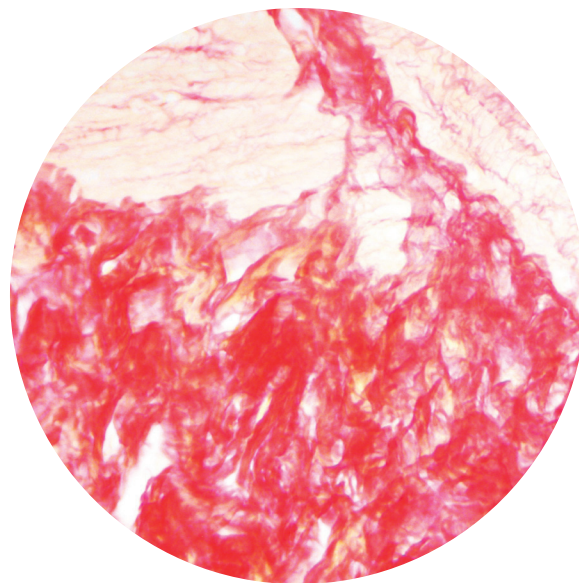
See what's Special about DBS Histology Stains

DBS offers a broad range of histology special stains for manual or automated instrument protocols providing maximum flexibility and cost effectiveness when performing your histology stains.

- Convenient 100 slide capacity
- Complete kit systems including protocol solutions for ease of setup



new *PAP Staining Kit*
*Differentiate between various
abnormal cell types in vaginal smears,
cytology smears including FNAC*
KT 038



new *Picro Sirius Red Stain*
*Visualizes collagen I and III fibers in
addition to muscle in tissue sections*
KT 037

What's special?

Product Name		Code
 Acid Fast Bacteria	Intended for use in the histological visualization of Acid Fast Bacilli and Tubercle Bacilli against a light green counterstain	KT 001
Alcian Blue pH1.0	Differentiates strongly sulfated mucosubstances (blue stain) while staining nuclei red and cytoplasm background pale pink	KT 002
Alcian Blue pH 2.5	Stains acidic mucins, carboxylated and sulfated mucosubstances in blue	KT 003
Amyloid	Visualize amyloid with Congo Red color	KT 008
Calcium	Detects calcium deposits in FFPE or frozen sections	KT 028
Colloidal Iron	Stains acid mucopolysaccharides bright blue while detecting collagen in red	KT 007
Copper Stain	Stains copper deposits light brown to red, while the nuclei stain blue	KT 033
Eosinophil-Mast Cell combo	Stains eosinophils bright red and simultaneously stains Mast cells bright blue	KT 004
 Elastic	Detects atrophy, thinning and loss of elastic fibers in vascular disease	KT 012
Fite's Stain	Leptra bacillus stain red while the background stains blue	KT 013
Fontana-Masson	Argentaffin cells and melanin in paraffin tissue sections stain brown to black, while the nuclei stain pink	KT 014
Giemsa	Differentiates between Helicobacter pylori (blue) and mast cells (dark blue with red granules) leaving nuclei to stain blue to violet and the cytoplasm stains light blue	KT 016
Gram Stain	Stains Gram-negative bacteria red, while other tissues and the nuclei stain yellow and red respectively	KT 018
H. Pylori Rapid Stain	Stains Helicobacter pylori bacteria blue while the background stains pale blue	KT 019
Hepatitis B	Hepatitis B surface antigens appear as dark brown aggregates in the cytoplasm of hepatocytes and occasionally in Kupffer cells	KT 020
Iron Stain	Ferric iron in paraffin tissue sections stains blue, leaving nuclei and other tissue to stain red and pink respectively	KT 021
Luxol Fast Blue	Stains myelin fibers blue to greenish blue, leaving the cells to stain pink to violet	KT 022
Methyl Green Pyronin	Stains DNA blue-green to green and RNA stains pink to red	KT 023
Mucicarmine	Stains epithelial mucin pink to red, while the nuclei stain blue	KT 024
Oil Red O	Stains neutral fat cells red, while the nuclei stain blue	KT 025
 PAS	Stains fungi, glycogen and mucin pink to red, while the nuclei and other tissue stain blue and green respectively	KT 027
Pneumocystis	Stains pneumocystis carinii violet to purple and the connective tissue stains blue to green	KT 030
PTAH	Stains collagen, fibrin and striated muscle brownish red, fibrin and muscle stain blue, while the nuclei stain dark blue	KT 029
Reticulum	Demonstrates histology of reticular fibers against a red background	KT 031
Steiner	Differentiates Legionella pneumophila (cat scratch fever) dark brown, spirochetes, Helicobacter pylori and fungi stain black, while the background stains yellow, tan or brown	KT 035
Trichrome	Differentiates muscle and intercellular fibers with red stain, while the nuclei and collagen stain black and blue respectively	KT 034
Warthin Starry	Identifies Helicobacter pylori, Legionella pneumophila with dark brown stain, while spirochetes and cat scratch fever bacteria stain black	KT 036

See what's special about DBS Special Stains!


For a free sample of our 2 new stains send a request to orders@dbiosys.com. **Code = DBS Whats Special** (valid for K 037 and K 038 only)



**Diagnostic
BioSystems**

United States (Headquarter)

6616 Owens Drive, Pleasanton, CA 94588, USA

Toll-Free (USA)  : +1 (844) 856-3350, customersupport@dbiosys.com

Europe

Germany
Lake Constance

Cell: +49 7557 929 3915
wolfgang.vogel@dbiosys.com

Mexico

Avenida Aztecas # 95, Casa 4
Colonia Pueblo de los Reyes
Alcaldia Coyoacan
CDMX, C.P. 04330

Cell: +525535709693
a.herrera@dbiosys.com

India

612, Eden Square
St. John's Road
Secunderabad – 500003

Cell: +91 9958293222
anandam@dbiosys.com

Canada

32 Lemsford Drive
Markham, ON L3S 4H4

Cell: +1 416 219 2035
hosna.mujadidi@dbiosys.com