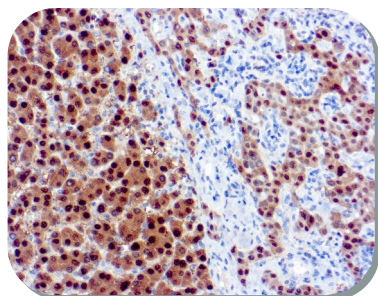


# New Mouse Monoclonal Antibodies

Diagnostic BioSystems launches new mouse monoclonal antibodies

Diagnostic  
BioSystems



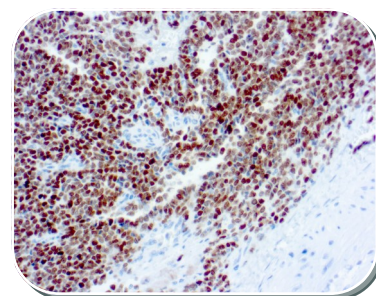
**NKX2.2**

## **NKX2.2 (Neuroendocrine & Ewing's Sarcoma Marker)**

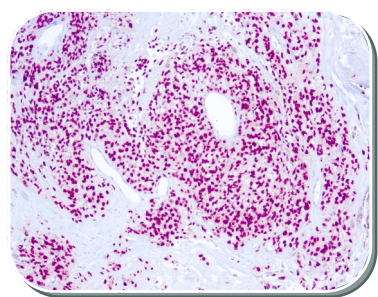
A valuable marker for Ewing sarcoma, with a sensitivity of 93% and a specificity of 89%, and aids in the differential diagnosis of small round cell tumors.

## **Arginase 1 (Hepatocellular Carcinoma Marker)**

Arginase 1 labels normal hepatocytes and granulocytes. ARG-1 is a sensitive and specific marker for identification of hepatocellular carcinoma



**Arginase 1**



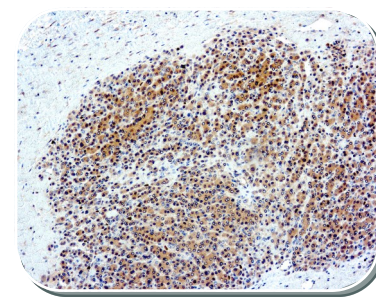
**SOX10**

## **SOX10 (Melanoma Marker)**

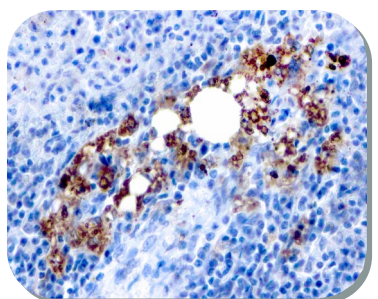
A sensitive marker of melanoma, including conventional, spindled and desmoplastic subtypes. A very reliable marker for recognizing residual desmoplastic melanomas

## **Glypican-3 (Hepatocellular Carcinoma Marker)**

A useful tumor marker for the diagnosis of hepatocellular carcinoma (HCC). Expression of GPC3 in thyroid follicular carcinoma is significantly higher than that of follicular adenoma.



**Glypican-3**



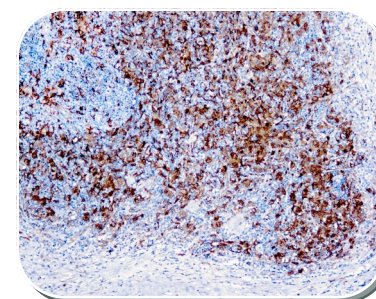
**TRAcP**

## **TRAcP (Hairy Cell Leukemia Marker)**

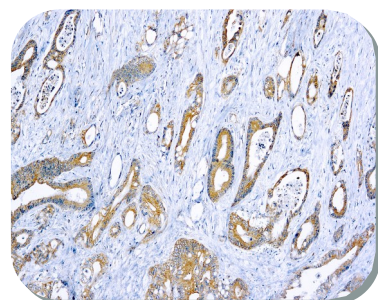
Anti-TRAcP antibody labels the cells of Hairy Cell Leukemia (HCL) with a high degree of sensitivity and specificity. Other cells stained with this antibody are tissue macrophages and osteoclasts.

## **Fascin-1 (Reed-Sternberg Cell Marker)**

Fascin-1 antibody has recently emerged as a sensitive new marker for Reed-Sternberg cells of Hodgkin's disease and also a prognostic marker in neuroendocrine neoplasms of the lung and ovarian cancer.



**Fascin-1**



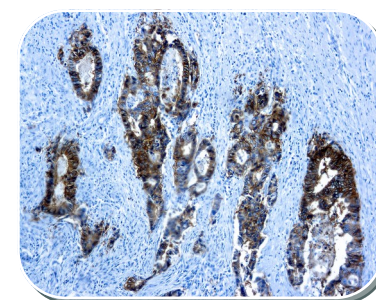
**TNF alpha**

## **TNF alpha (Tumor Necrosis Factor alpha)**

TNF alpha has been implicated in a variety of diseases, including autoimmune diseases, insulin resistance, and is currently being evaluated in treatment of certain cancers and AIDS Related Complex.

## **EP-CAM (Epithelial Marker)**

Ep-CAM is expressed on baso-lateral cell surface in most simple epithelia and a vast majority of carcinomas. It is used to distinguish adenocarcinoma from pleural mesothelioma and hepatocellular carcinoma.



**EP-CAM**

# Order Information

Diagnostic  
BioSystems




Antibody	Clone	Status	Cat No.
Arginase	DBM15.12	IVD	Mob484/PDM190
Arginase	DBM15.13	IVD	Mob488/PDM197
PAX7	DBM15.29	IVD	Mob503/PDM231
Glycophorin A	DBM15.17	IVD	Mob483/PDM196
NKX2.2	DBM15.15	IVD	Mob486/PDM199
CD11c	DBM15.16	IVD	Mob485/PDM198
KSP-Cadherin	DBM15.14	IVD	Mob482/PDM195
Fascin-1	DBM15.6	IVD	Mob496/PDM216
ZAP70	DBM15.11	IVD	Mob480/PDM221
CD99/MIC2	DBM15.1	IVD	Mob487/PDM200
TNF alpha	DBM15.28	IVD	Mob502/PDM230
Glypican-3	DBM15.20	IVD	Mob497/PDM217
CELA3B	DBM15.4	IVD	Mob478/PDM222
TRAcP	DBM15.2	IVD	Mob490/PDM203
Ep-CAM	DBM15.3	IVD	Mob477/PDM224
SOX-10	DBM15.10	IVD	Mob481/PDM220
CD68	DBM15.9	IVD	Mob492/PDM208
Wilm's Tumor 1	DBM15.18	IVD	Mob479/PDM218
MUC6	DBM15.21	IVD	Mob493/PDM210
PAX6	DBM15.24	IVD	Mob494/PDM214
PSAP	DBM15.23	IVD	Mob498/PDM225
NSE gamma	DBM15.25	IVD	Mob499/PDM227
PSA	DBM15.34	IVD*	Mob508/PDM236
BCL-6	DBM15.27	IVD	Mob501/PDM229



Diagnostic  
BioSystems

United States (Headquarter)

6616 Owens Drive, Pleasanton, CA 94588, USA

Toll-Free (USA)  : +1 (844) 856-3350, [customersupport@dbiosys.com](mailto:customersupport@dbiosys.com)



Contact your distributor  
for more information  
and visit us at [www.dbiosys.com](http://www.dbiosys.com)