



# Diagnostic BioSystems

Advanced Tissue Diagnostics. Trusted Solutions.

## OVARIAN CANCER MARKERS

Novel Antibodies for Ovarian Cancer

### Novel Antibodies Including Anti-SALL4, Anti-BRCA1, Anti-CA 125, Anti-PAX8 and Anti- HCG available for Ovarian Cancer

Ovarian cancer ranks fifth in cancer deaths among women, accounting for more deaths than any other cancer of the female reproductive system. A woman's risk of getting ovarian cancer during her lifetime is about 1 in 78. Her lifetime chance of dying from ovarian cancer is about 1 in 108. The American Cancer Society estimates for ovarian cancer in the United States for 2020 are:

- About 21,750 women will receive a new diagnosis of ovarian cancer.
- About 13,940 women will die from ovarian cancer.

Tumor Marker	Type of Ovarian Malignancy
Sall4	Distinguishes ovarian yolk sac tumor (SALL4+) from clear cell carcinoma (SALL4-)
CA125	Marker of first choice for epithelial ovarian malignancy
HCG	Marker of first choice for Choriocarcinoma ovary
AFP	Marker of first choice for endodermal sinus tumor of ovary
HCG and /or AFP	Mixed germ cell tumor of ovary

DBS' comprehensive Ovarian panel includes novel rabbit monoclonal and mouse monoclonal antibodies. These antibodies ensure sensitivity and specificity of IHC tests. As a result, pathologists and oncologists can have rapid, precise results and an accurate diagnosis to determine an effective treatment for their patients.

Ovarian carcinoma stained with anti-BRCA1 using DAB

Ovarian carcinoma stained with anti-CA125 using DAB

Testis stained with anti-SALL4 using DAB

Placenta stained with anti-HCG using DAB



### **α-Fetoprotein (AFP) Clone: C3 (M)** **Cat. No.: Mob129, PDM057**

ERG or ETS-related gene is a member of the ETS transcription factor family. Recent studies have observed ERG as a frequently overexpressed proto-oncogene present in the majority of prostate cancer cases, often found fused with the TMPRSS2 gene. The presence of the TMPRSS2: ERG fusion product has been associated with aggressive forms of prostate cancer.

### **PAX-8 Clone: 4H7B3 (M) Cat. No.: PDM180**

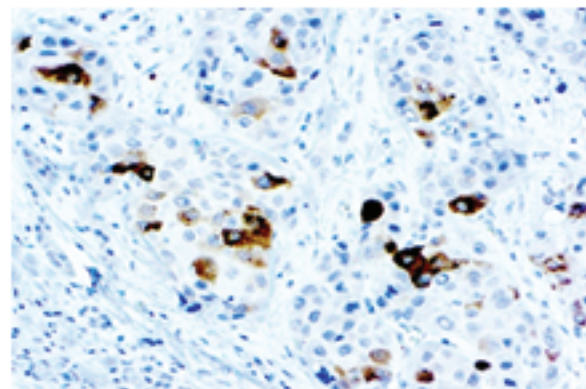
PAX-8 is expressed in a high percentage of renal cell carcinomas and ovarian cancers. This mouse monoclonal PAX-8 antibody [BC12] has been designed to target restricted epitopes and exhibits higher specificity and provides sharper staining than the PAX-8 rabbit polyclonal antibody. Unlike the polyclonal PAX-8, this mouse monoclonal antibody does not stain B-cells, and does not recognize epitopes of pancreatic origin and neuroendocrine cells in stomach and colon; thus providing superior specificity. The expression of the mouse monoclonal PAX-8 targets antigens found in normal kidney, thyroid and cervix, but not normal ovary. IHC positive stain on Ovarian carcinoma, except mucinous types.

### **Cytokeratin 7 Clone: OV-TL 12/30 (M)** **Cat. No: Mob057 PDM097**

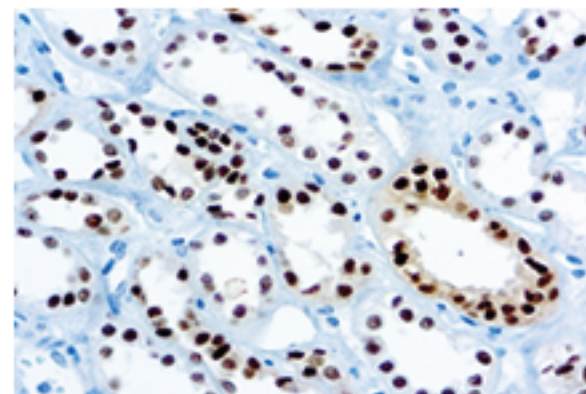
Cytokeratin 7 is expressed in epithelial cells of ovary, lung and breast. The antibody OVTL 12/30 is an excellent tool in the differential diagnosis of malignant cells and to determine primary tumor localization. It stains a 54kD protein band of cytoskeletal proteins from cell lines in one and two dimensional immunoblots.

### **Cytokeratin, Pan (AE1/AE3)** **Cat. No.: Mob190, PDM072** **Clone: AE1/AE3 (M)**

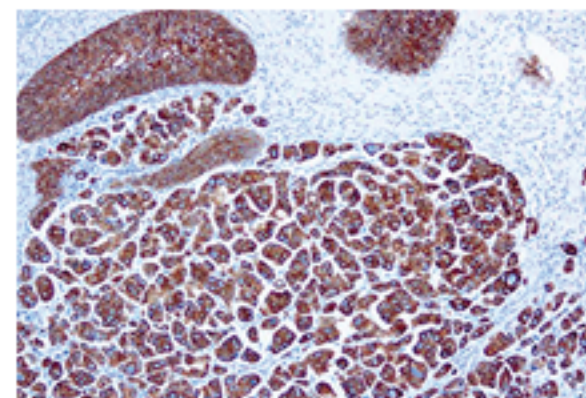
This AE1/AE3 antibody cocktail recognizes most of the acidic (Type I) keratins as well as basic (Type II). It recognizes keratin polypeptides of 40, 48, 50, 52, 54, 56.5, 58, 59 and 64 to 67 kDa. In Ovarian sex cord stromal tumors (overall 27% positive stain) and positive stain on Ovary Germ cell tumors and Carcinoid tumor



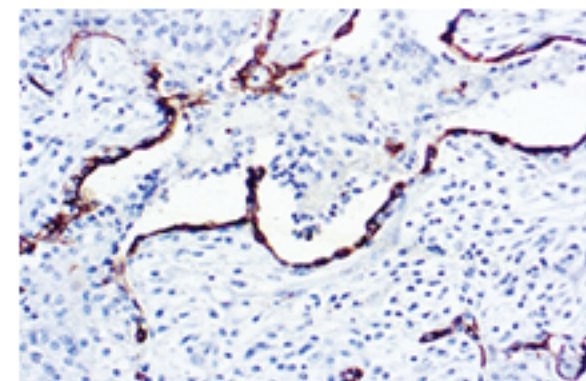
*Hepatocellular carcinoma stained with anti-AFP using DAB*



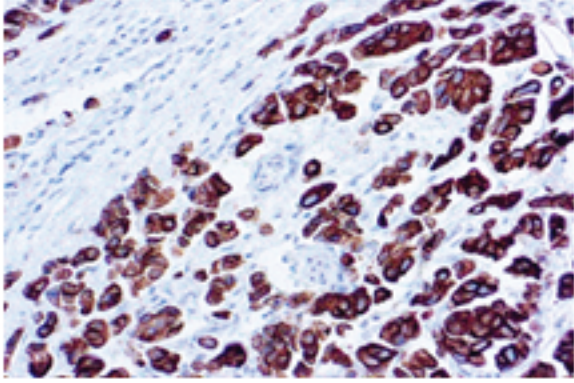
*Renal Cell Ca. stained with anti-PAX-8 using DAB*



*Formalin fixed paraffin embedded human lung stained with Cytokeratin 7*



*C Squamous lung Ca. stained with anti-CK Pan using DAB*



*Colon Ca. stained with anti-CK20 using DAB*

## Cytokeratin 20 Clone: KS 20.8 (M) Cat. No: Mob123 PDM049

Cytokeratin 20 is less acidic than the other type I cytokeratins and is of particular interest because of its restricted range of expression. This antibody reacts with cytokeratin polypeptide of 46 kDa in immunoblot analyses. Studies have shown that a marked difference exists in the expression of Cytokeratin 20 among various carcinomas. Primary ovarian neoplasm (benign, borderline or malignant) IHC stain on SATB2 negative, CK20 / CDX2 / MUC2 negative or patchy, PAX8 positive.


*R - Rabbit M - Mouse*



**Diagnostic  
BioSystems**

### United States (Headquarter)

6616 Owens Drive, Pleasanton, CA 94588, USA

Toll-Free (USA)  : +1 (844) 856-3350, [customersupport@dbiosys.com](mailto:customersupport@dbiosys.com)



Contact your distributor  
for more information  
and visit us at [www.dbiosys.com](http://www.dbiosys.com)

### Europe

Germany  
Lake Constance

Cell: +49 7557 929 3915  
[wolfgang.vogel@dbiosys.com](mailto:wolfgang.vogel@dbiosys.com)

### Mexico

Avenida Aztecas # 95, Casa 4  
Colonia Pueblo de los Reyes  
Alcaldia Coyoacan  
CDMX, C.P. 04330

Cell: +525535709693  
[a.herrera@dbiosys.com](mailto:a.herrera@dbiosys.com)

### India

612, Eden Square  
St. John's Road  
Secunderabad – 500003

Cell: +91 9958293222  
[anandam@dbiosys.com](mailto:anandam@dbiosys.com)

### Canada

32 Lemsford Drive  
Markham, ON L3S 4H4

Cell: +1 416 219 2035  
[hosna.mujadidi@dbiosys.com](mailto:hosna.mujadidi@dbiosys.com)