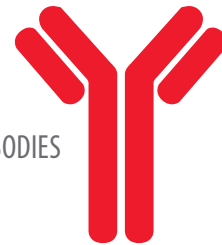


# PD-1 Antibody

## Mouse Monoclonal

IHC PRIMARY ANTIBODIES



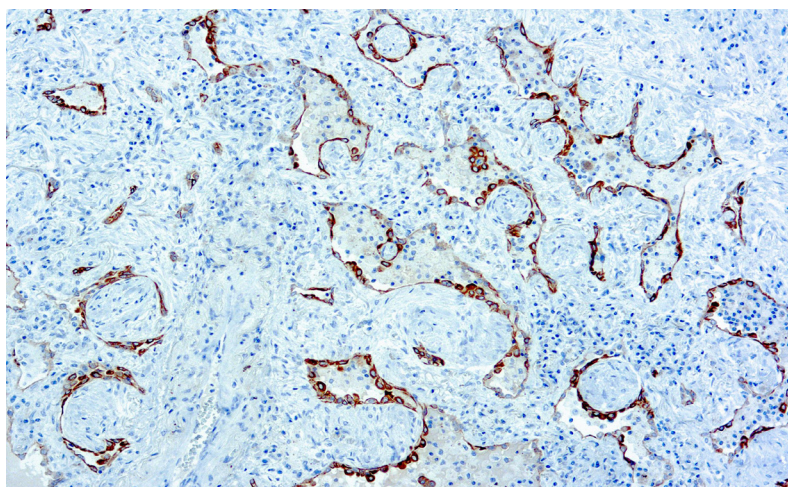
Diagnostic BioSystems launches a new (IVD) PD-1 antibody, aiding in the diagnosis of various cancers. The PD-L1/B7.1 and PD-L1/PD-1 pathways can protect tumors from cytotoxic T cells, ultimately inhibiting the antitumor immune response in two ways:

- Deactivating cytotoxic T cells in the tumor microenvironment
- Preventing priming and activation of new T cells in the lymph nodes and subsequent recruitment to the tumor.

PD-L1 binds to T-cell receptors B7.1 and PD-1, deactivating cytotoxic T cells. Once deactivated, T cells remain inhibited in the tumor microenvironment.

### Why PD-1?

- PD-1 and PD-L1 are important checkpoints in tumor development
- PD-1/PD-L1 pathway is a promising target for treating NSCLC
- Receptor expressed primarily on activated T cell
- Aid to identify disease types to treatment



*Formalin fixed paraffin embedded human Lung Squamous Cell Carcinoma tissue stained with Diagnostic BioSystems PD-1 antibody.*

The PD-1 antibody has recently emerged as a powerful ancillary tool for predictive biomarkers with important therapeutic implications.

### Diagnostic BioSystems PD-1

Antibody Type: Mouse Monoclonal

Clone: DBM15.1

Regulatory Status: IVD

Cellular Localization: Membrane

Format: Prediluted & Concentrated

## Ordering Information

Product Description	Cat. No.	Pack size
PD-1 antibody	PDM190	6 ml; 25 ml
	Mob475	0.5 ml; 1 ml

## PD-1 References:


1. Chen DS, Mellman I. Oncology meets immunology: the cancer-immunity cycle. *Immunity*. 2013; 39: 1-10
2. Chen DS, Irving BA, Hodi FS. Molecular pathways: next-generation immunotherapy-inhibiting programmed death-ligand 1 and programmed death-1. *Clin Cancer Res*. 2012; 18: 6580-6587
3. Keir ME, et al. PD-1 and its ligands in tolerance and immunity. *Annu Rev Immunol*. 2008; 26: 677-704



**Diagnostic  
BioSystems**

### United States (Headquarter)

6616 Owens Drive, Pleasanton, CA 94588, USA

Toll-Free (USA)  : +1 (844) 856-3350, [customersupport@dbiosys.com](mailto:customersupport@dbiosys.com)



Contact your distributor  
for more information  
and visit us at [www.dbiosys.com](http://www.dbiosys.com)

### Europe

Germany  
Lake Constance

Cell: +49 7557 929 3915  
[wolfgang.vogel@dbiosys.com](mailto:wolfgang.vogel@dbiosys.com)

### Mexico

Avenida Aztecas # 95, Casa 4  
Colonia Pueblo de los Reyes  
Alcaldia Coyoacan  
CDMX, C.P. 04330

Cell: +525535709693  
[a.herrera@dbiosys.com](mailto:a.herrera@dbiosys.com)

### India

612, Eden Square  
St. John's Road  
Secunderabad – 500003

Cell: +91 9958293222  
[anandam@dbiosys.com](mailto:anandam@dbiosys.com)

### Canada

32 Lemsford Drive  
Markham, ON L3S 4H4

Cell: +1 416 219 2035  
[hosna.mujadidi@dbiosys.com](mailto:hosna.mujadidi@dbiosys.com)