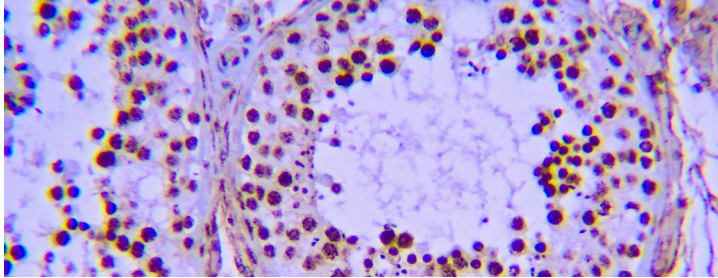




Primary Antibodies



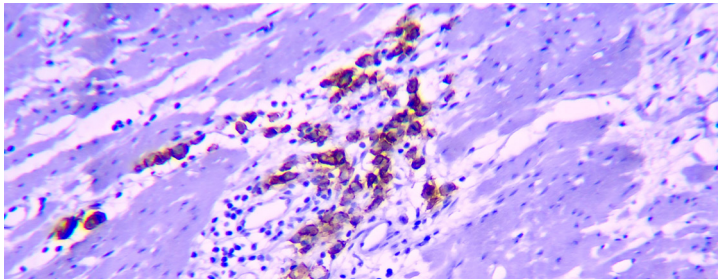
NUT1

Cat. No: RMAB115R Concentrated, RMPD115R Prediluted

Pack Size: 1 ml, 6 ml

Clone: DBRRM7.36

NUT stands for nuclear protein in testis. NUT1 is an antibody. When used with immunohistochemistry (IHC), this antibody can detect NUT associated carcinoma in the midline anatomic sites and other body sites as well. NUT1 IHC shows diffuse speckled nuclear positivity in 87% of carcinomas and is 100% specific.



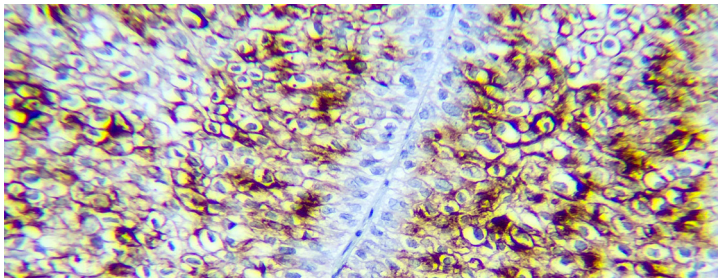
Claudin 18.2

Cat. No: RMAB116R Concentrated, RMPD116R Prediluted

Pack Size: 1 ml, 6 ml

Clone: DBRRM1.82

Claudin 18.2 is a tight junction protein expressed in stomach tissue. The immunohistochemistry of Claudin 18.2 antibody shows membranous staining pattern and can be used for identifying gastric adenocarcinoma (68%-77%) and pancreatic adenocarcinoma (68%-80%).



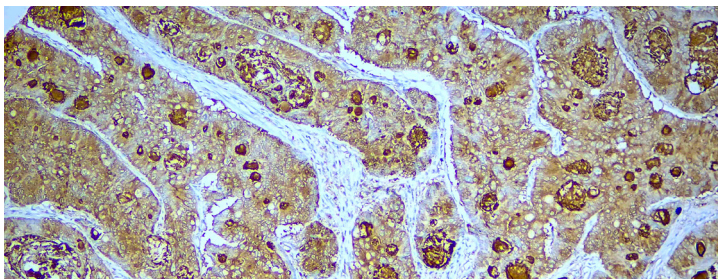
Uroplakin 3B

Cat. No: RMAB117R Concentrated, RMPD117R Prediluted

Pack Size: 1 ml, 6 ml

Clone: DBRRM3.66

Uroplakin 3B is expressed on the surface of urothelial epithelial and mesothelial. Its antibody is very useful in identifying urothelial and mesothelial origin of cancers by immunohistochemistry. This protein encoded by this gene is a member of transmembrane 4 superfamily. The protein mediate signal transduction events that play a role in the regulation of cell development, activation.



CEACAM5

Cat. No: RMAB118R Concentrated, RMPD118R Prediluted

Pack Size: 1 ml, 6 ml

Clone: DBRRM2.85

CEACAM5 has broad tissue distribution and is positive in carcinomas of GI tract, pancreas, and lung, but typically negative in lymphomas, mesothelioma and certain squamous cell carcinomas.

